



## **EQUIPMENT CODE STANDARD “ECS”.**

### **Refrigerated Containers – Component codes, reference guide.**

Version October 7, 2025.

#### **IICL workgroup:**

**SEACO**

**Chai Wah Koh  
Hendry Xu  
Jos Vanstiphout**

**SEACUBE  
TEXTAINER**

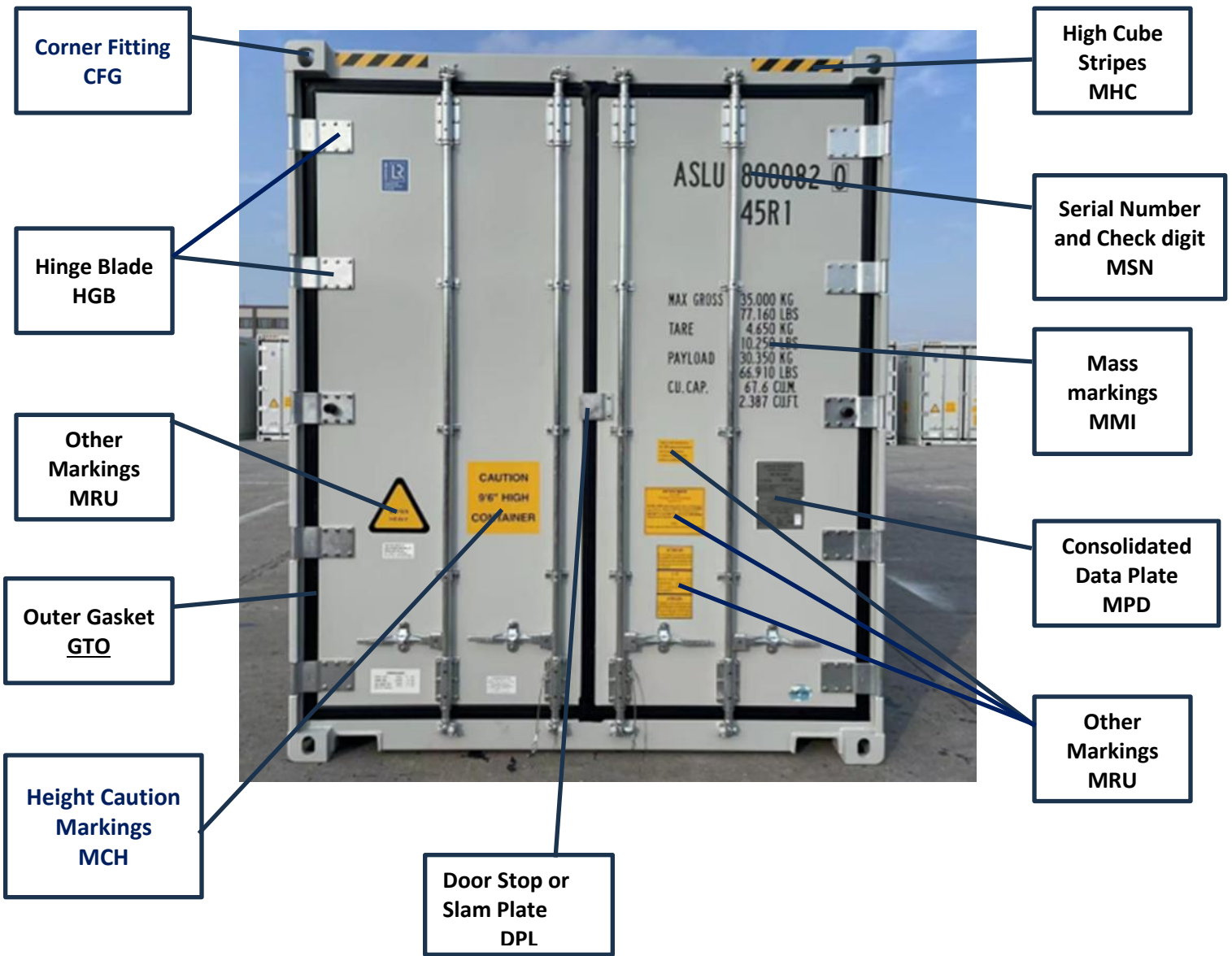
**Jorge Dias  
Alessandro Caldon  
Peter Brandon**

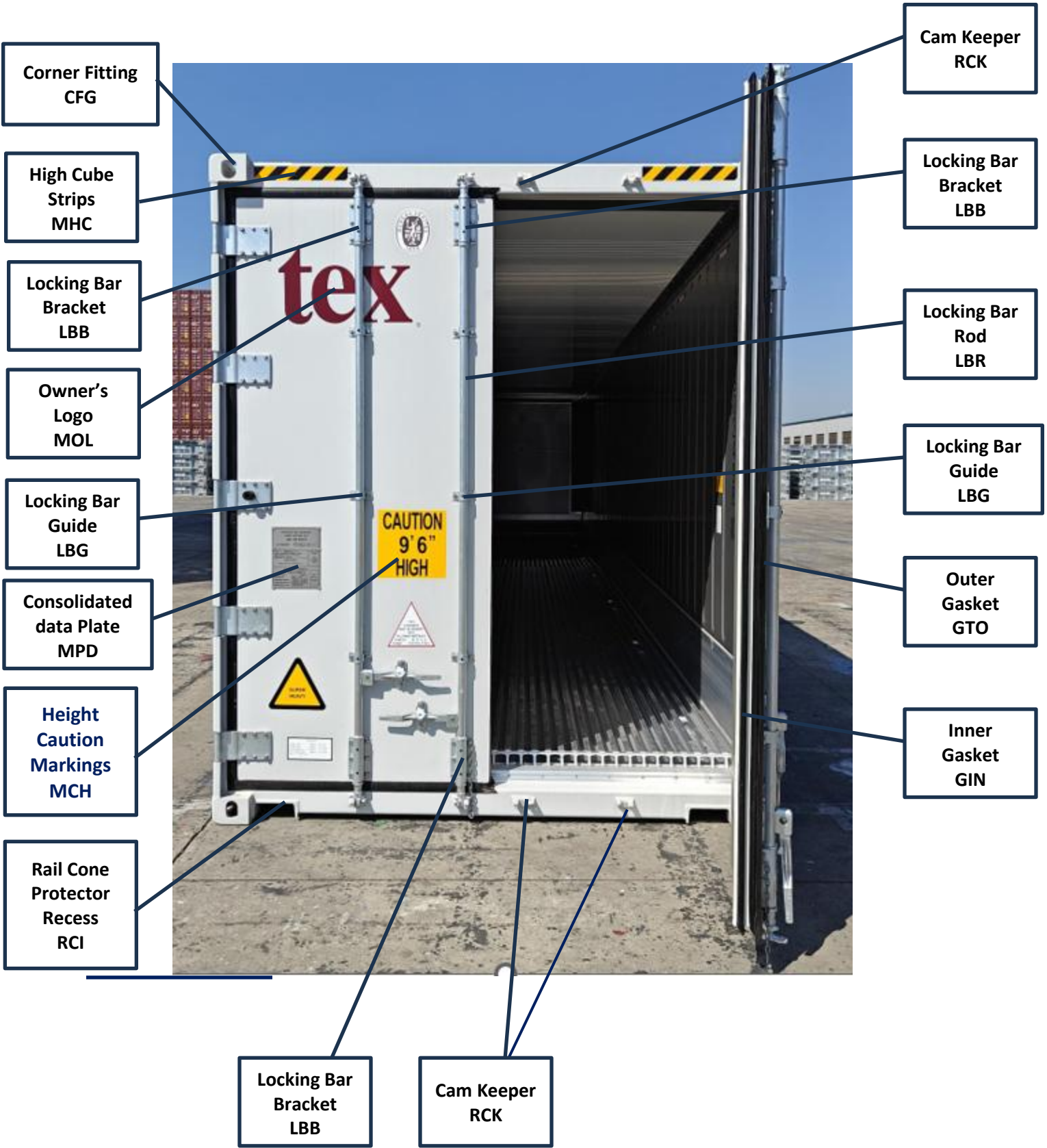
**TRITON**

**Dennis Van Hal  
Stijn Doffyn  
Toni Jakat**

#### **IICL:**

**Luiz Gonçalves  
technical@iicl.org**





**Rail Cone  
Protector  
Recess  
RCI**

**T-Floor  
Drain  
TFD**



**Panel Inner  
Cladding  
PIC**

**Corner Post  
J-bar  
CPJ**

**Panel Inner  
Cladding  
PIC**

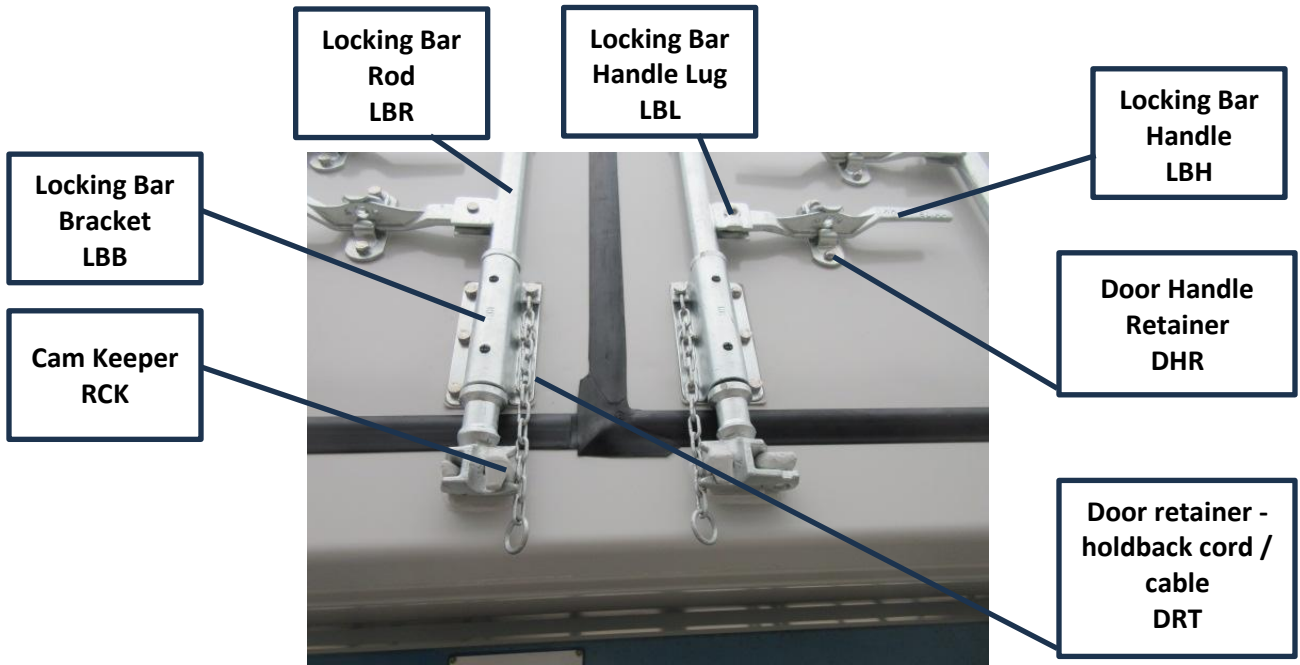
**Scuff Plate  
/ Lining  
PSL**

**T-Floor  
Assembly  
TFA**



**Load Line  
Decal  
LLD**

**T-floor Strip  
TFI**



**Outer  
Gasket  
GTO**

**Locking Bar  
Cam**



**Rail Cone Protector  
Recess  
RCI**

**Corner Post  
J Bar  
CPJ**

**Hinge Pin  
HGP**

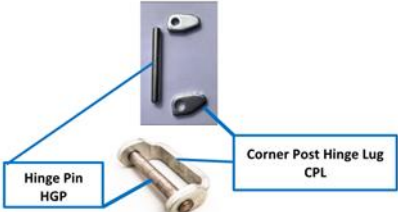
**Hinge Pin  
Lug  
CPL**



**Outer  
Gasket  
GTO**

**Inner  
gasket  
GIN**

**Hinge Blade  
HGB**



**Hinge Pin  
HGP**

**Corner Post Hinge Lug  
CPL**

**Locking Bar  
Handle  
LBH**

**Locking bar  
bracket  
LBB**

**Door Locking  
Bar Rod  
LBR**



**Door Chain  
Hook  
DRH**

**Door retainer -  
holdback cord /  
cable  
DRT**

**Outer  
Gasket  
GTO**

**Inner  
Gasket  
GIN**



**Rail  
Assembly  
RLA**

**Panel -  
Outer  
Cladding  
POC**

**Other  
Markings  
MRU**

**Rail  
Assembly  
RLA**

**Corner Post  
Assembly  
CPA**

**High cube  
strips  
MHC**

**Roof Corner  
Gusset  
RCG**

**High cube  
strips  
MHC**



**Serial Number  
and Check Digit  
MSN**

**Header  
Extension Plate  
HEP**

**Corner  
Fitting  
CFG**

**Rail  
Assembly  
RLA**

Roof Corner Gusset RCG



Clip-on gen-set clamp socket COS

High cube strips MHC

Header Extension Plate

Other markings MRU

Corner Fitting CFG



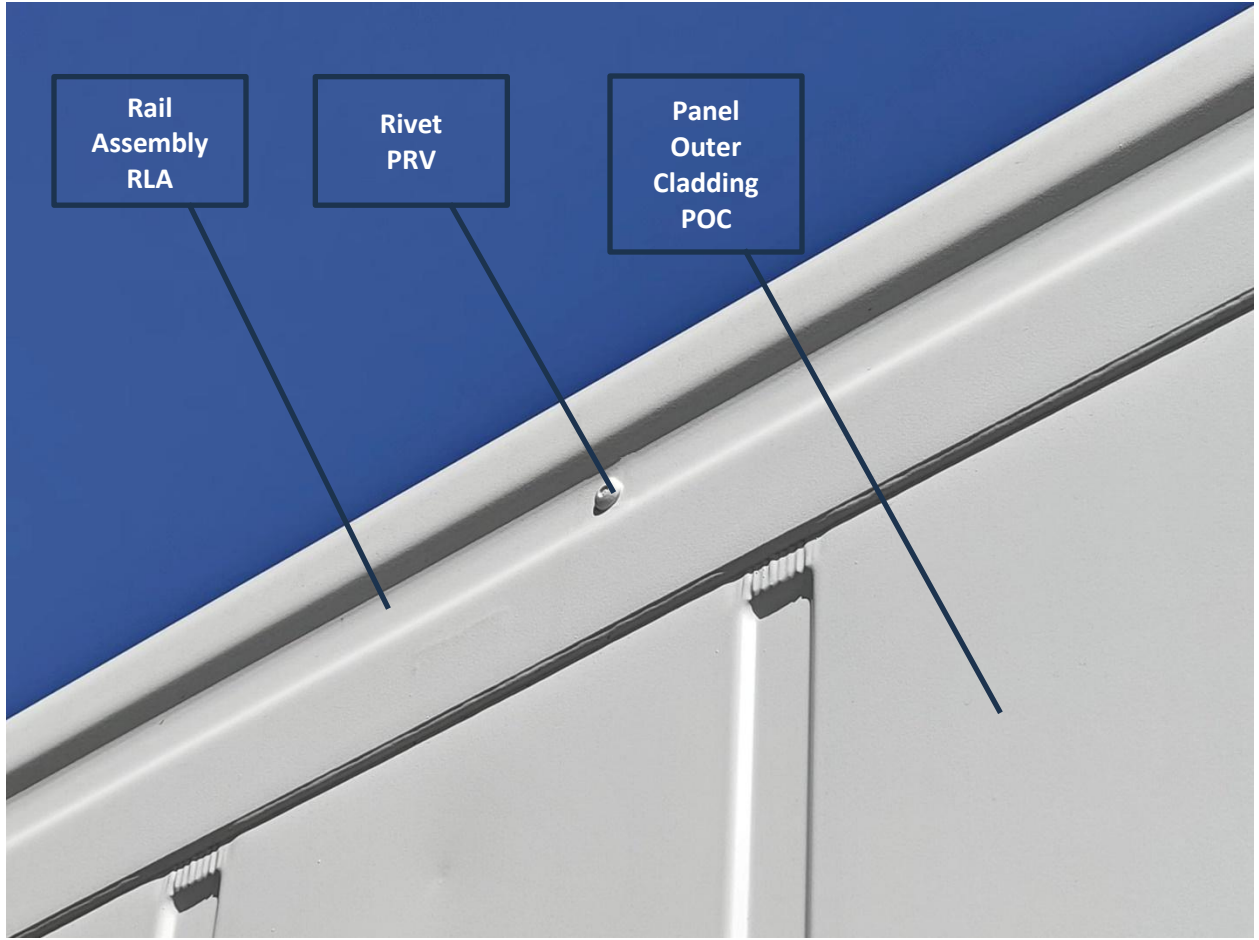
Clip-on gen-set clamp socket COS

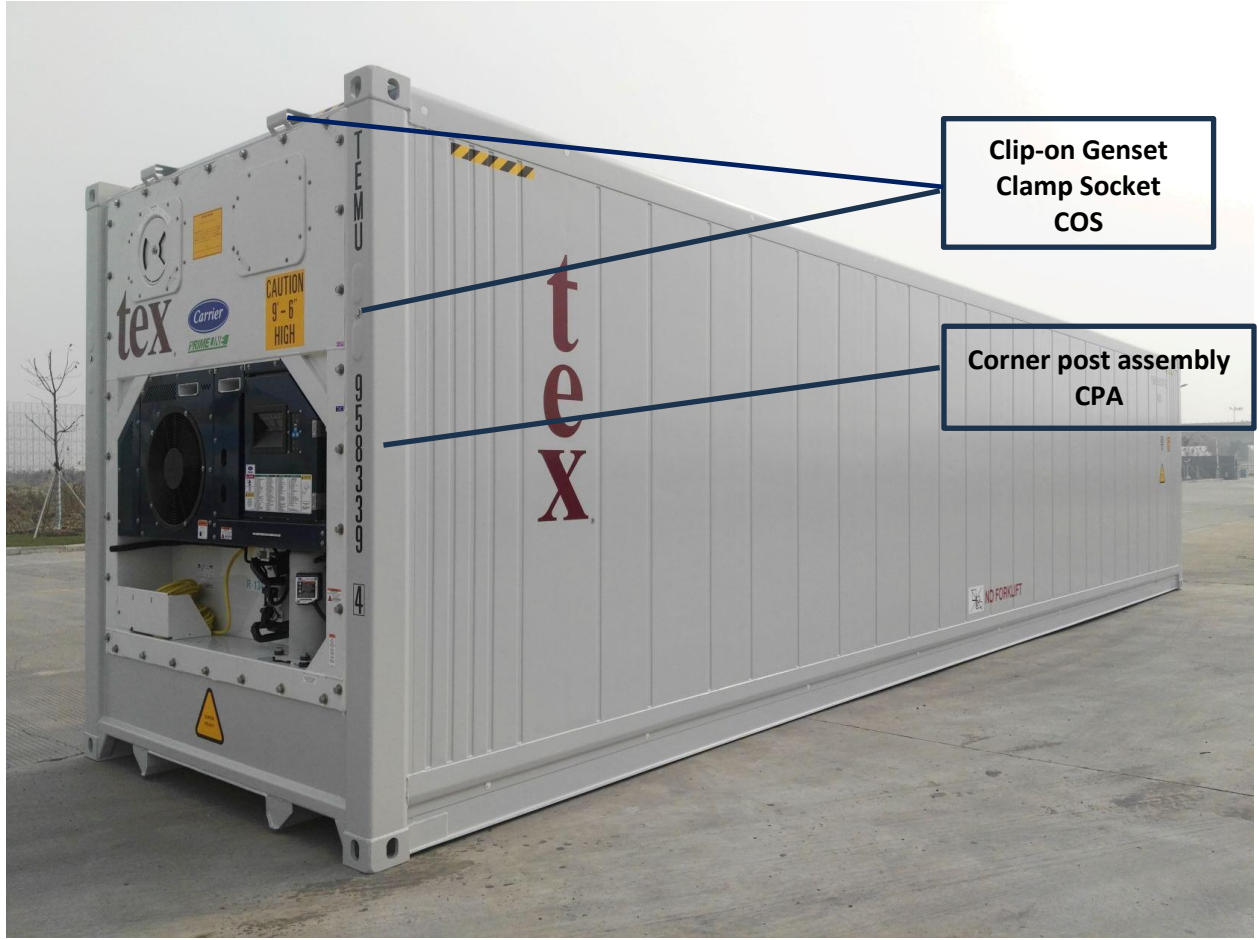
Roof corner gusset RCG

Header Extension Plate HEP

Rail Assembly RLA







Corner Fitting CFG

High cube strips MHC

Clip-on Genset Clamp Socket COS

Hardware HWR

Evaporator Access Panel VAP



Evaporator Access Panel VAP

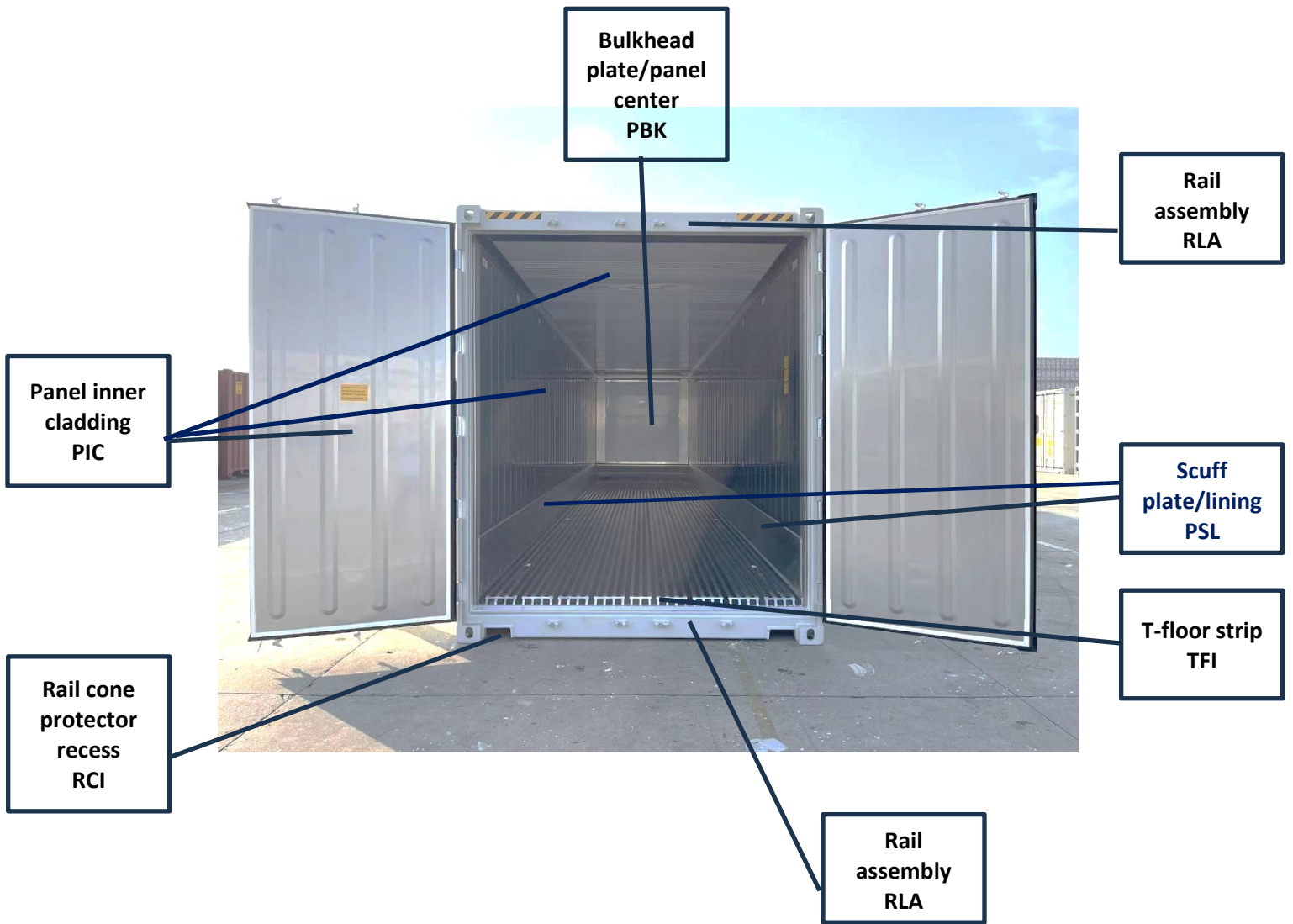
Air Exchange Vent ARE

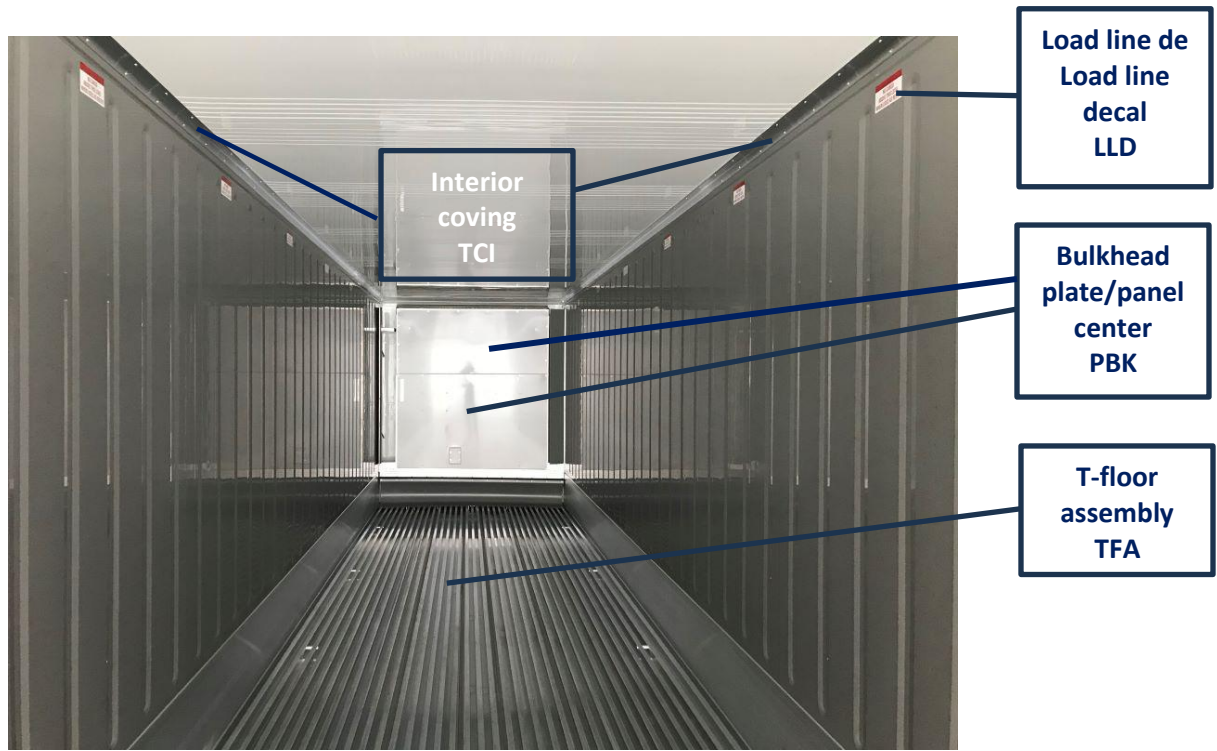
Electrical Box BEA

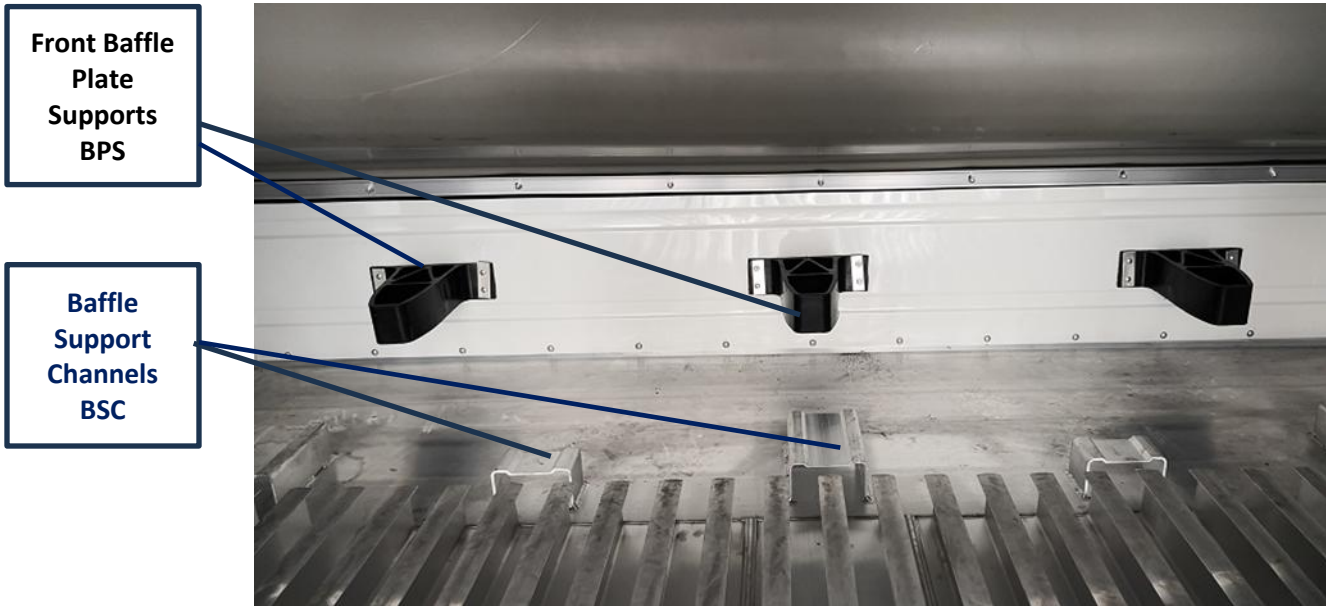
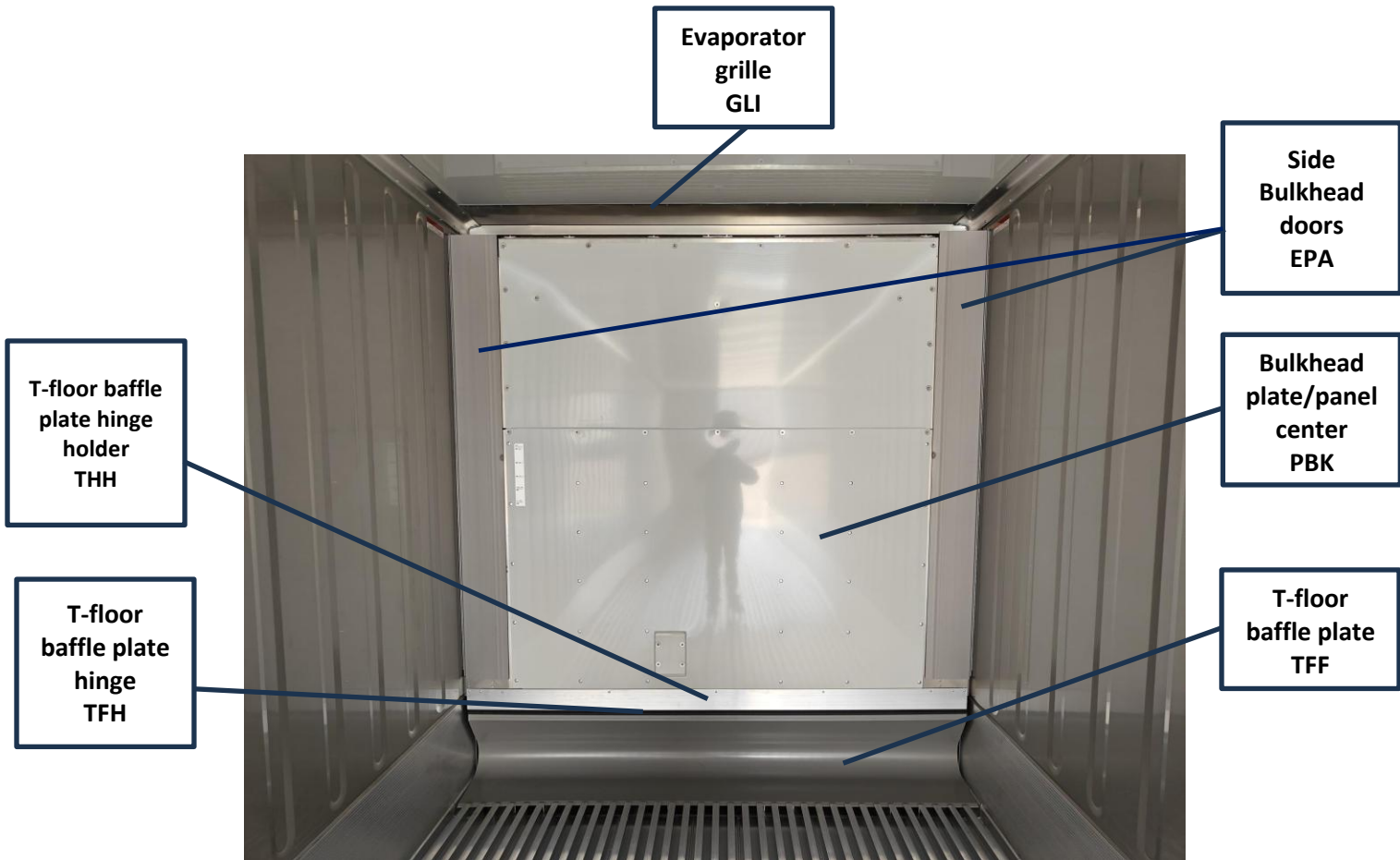
Compressor - Complete with Motor ASY

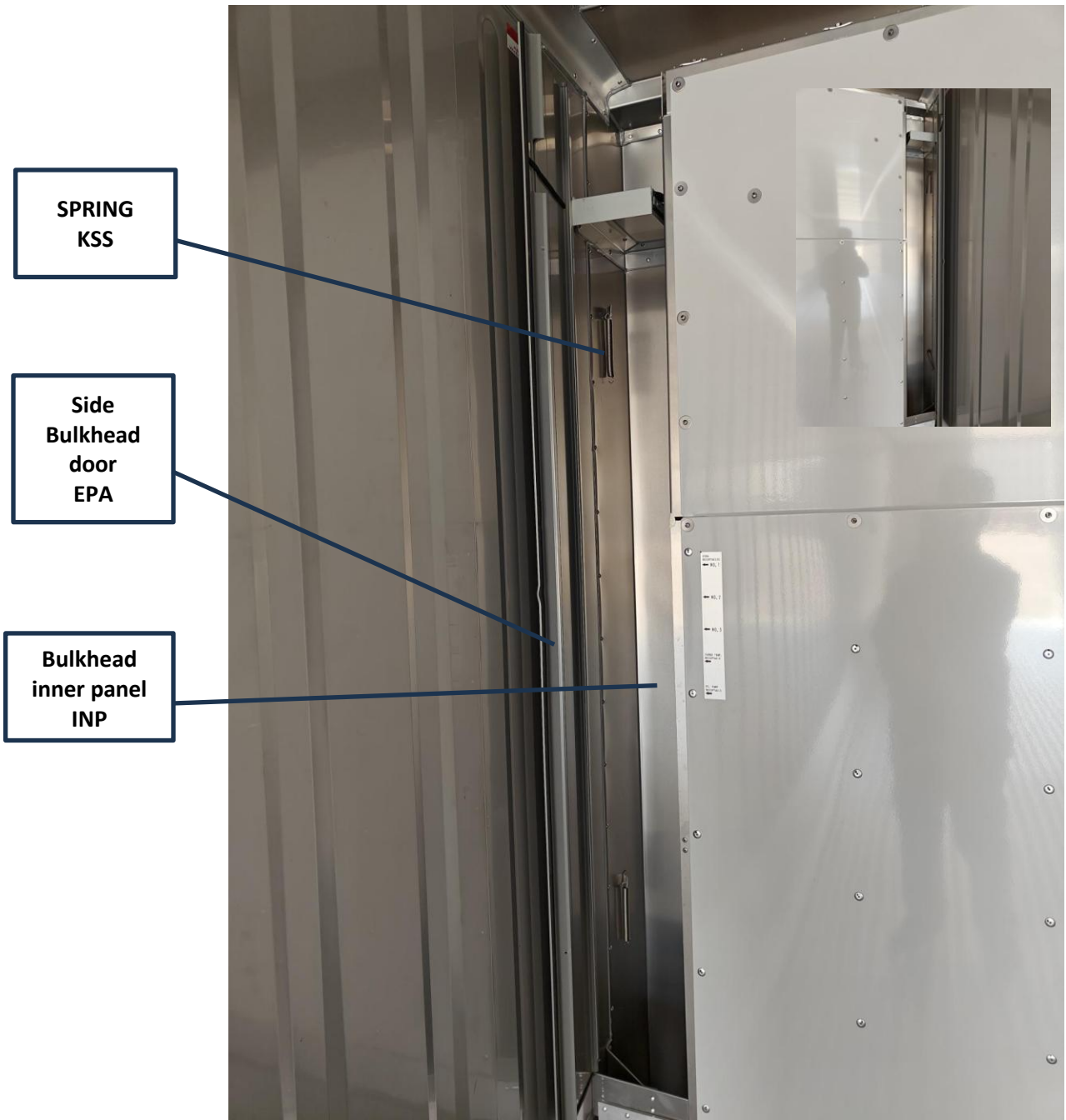
Rail Assembly RLA

Cable Guard Small QPS





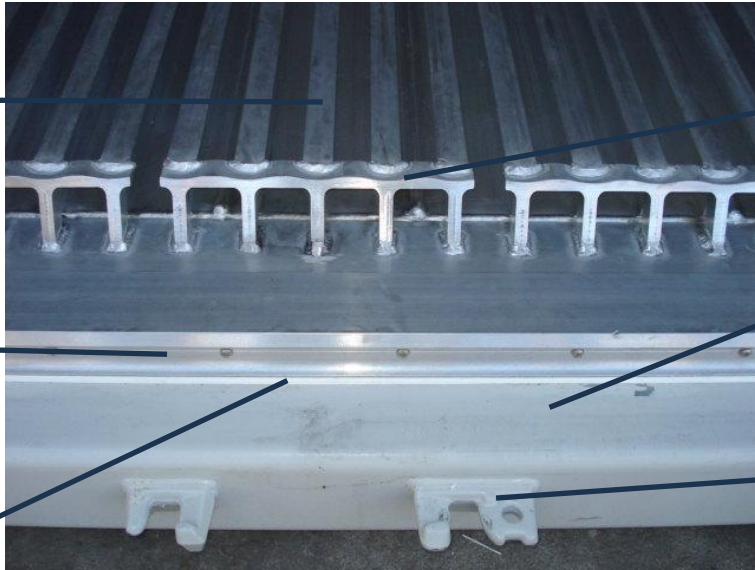




**T-floor  
assembly  
TFA**

**T-floor  
casting  
TFC**

**T-floor end  
seal  
TFS**



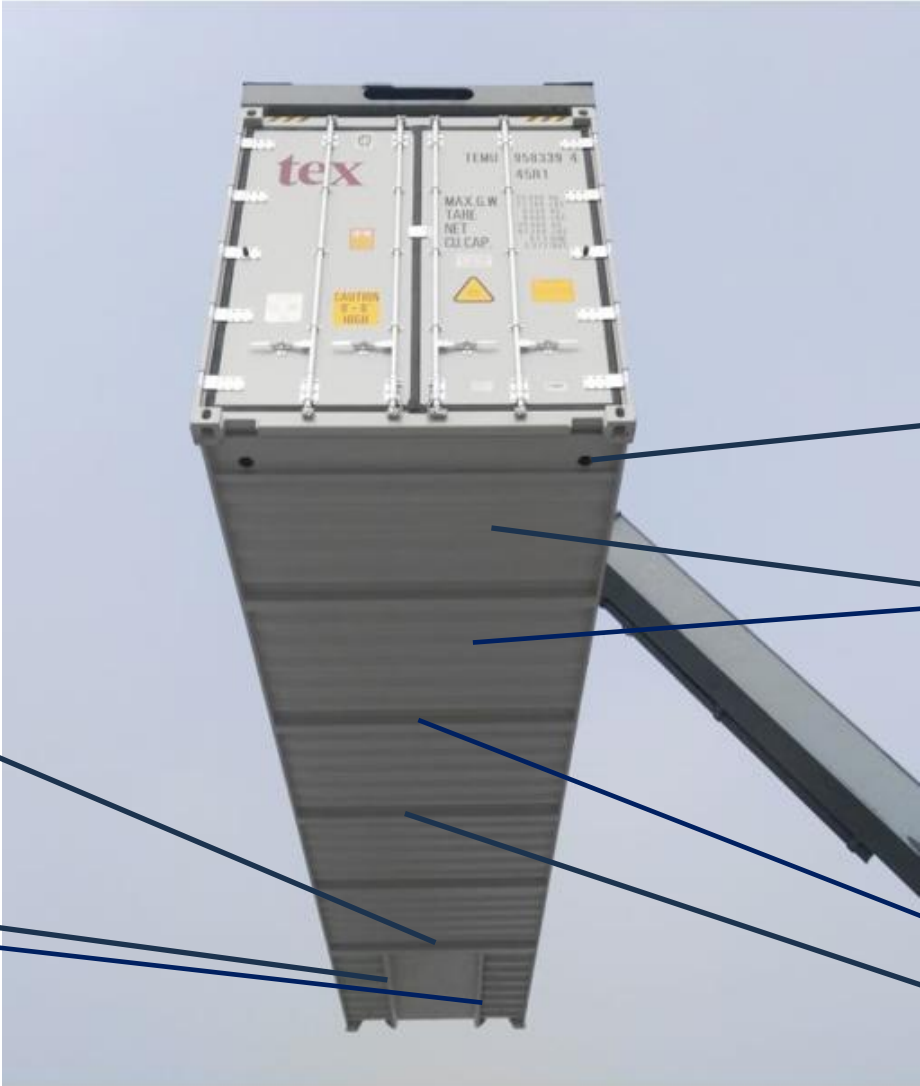
**T-floor strip  
TFI**

**Rail  
assembly  
RLA**

**Cam keeper  
RCK**



**Panel edge  
profile  
PEP**



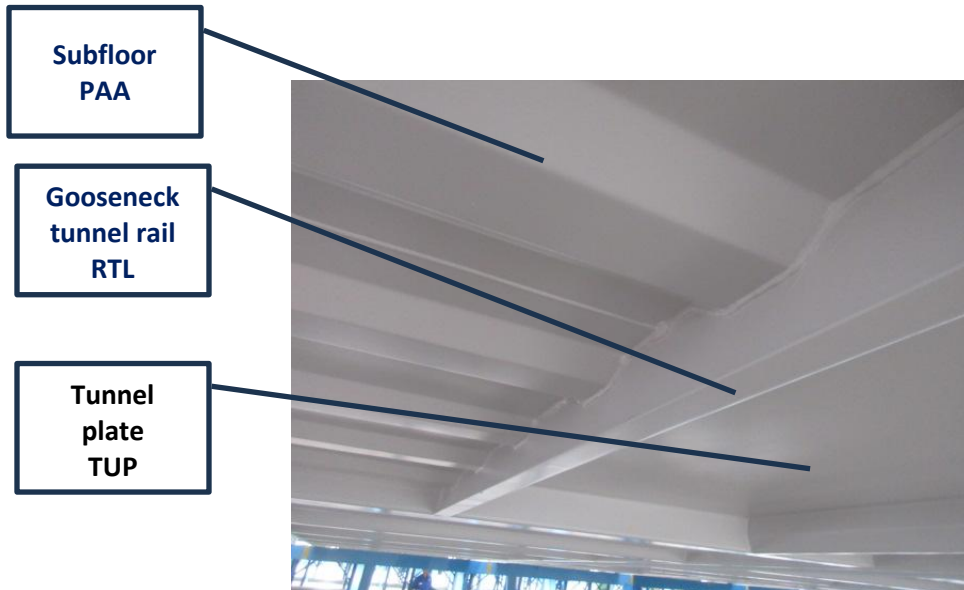
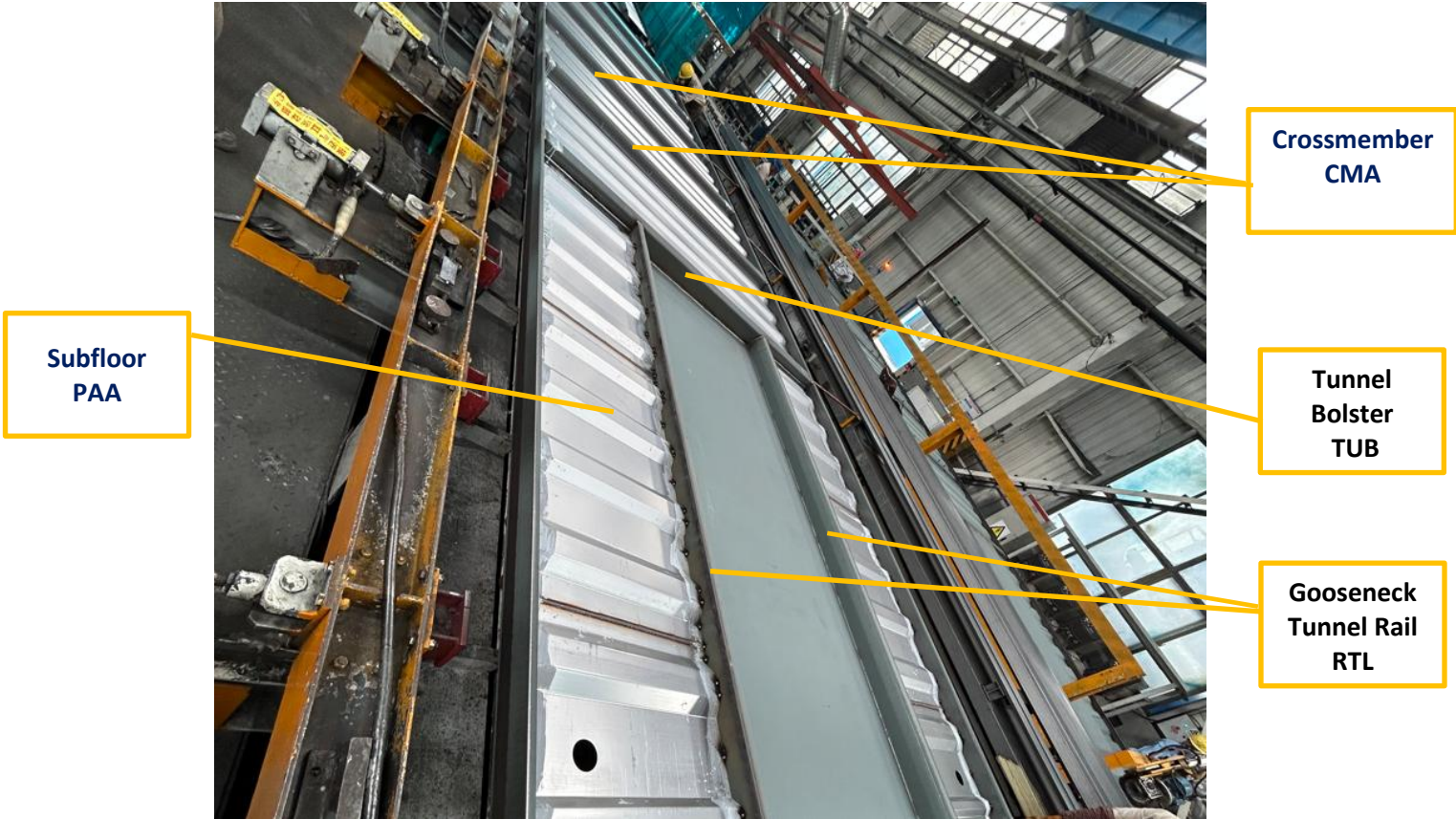
**Tunnel  
Bolster  
TUB**

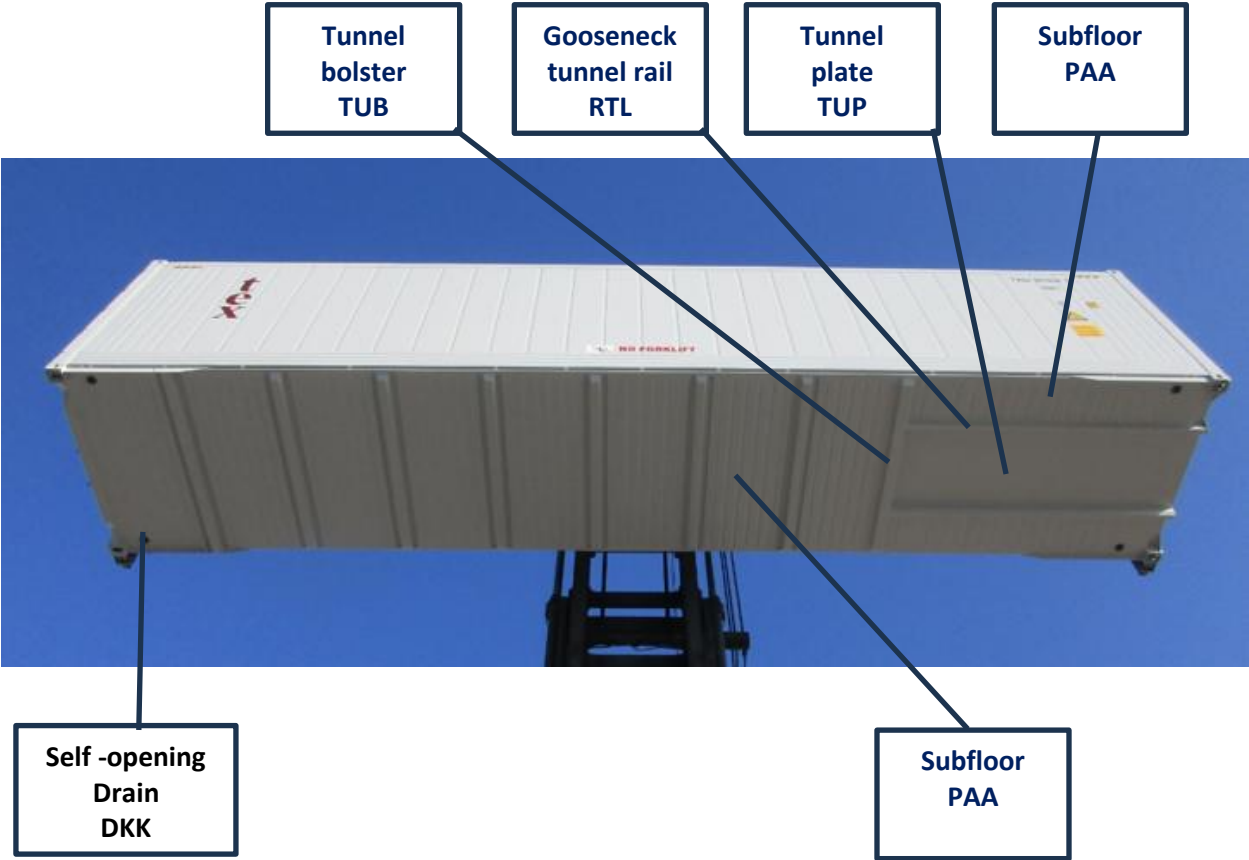
**Gooseneck  
Tunnel Rail  
RTL**

**Self -opening  
Drain  
DKK**

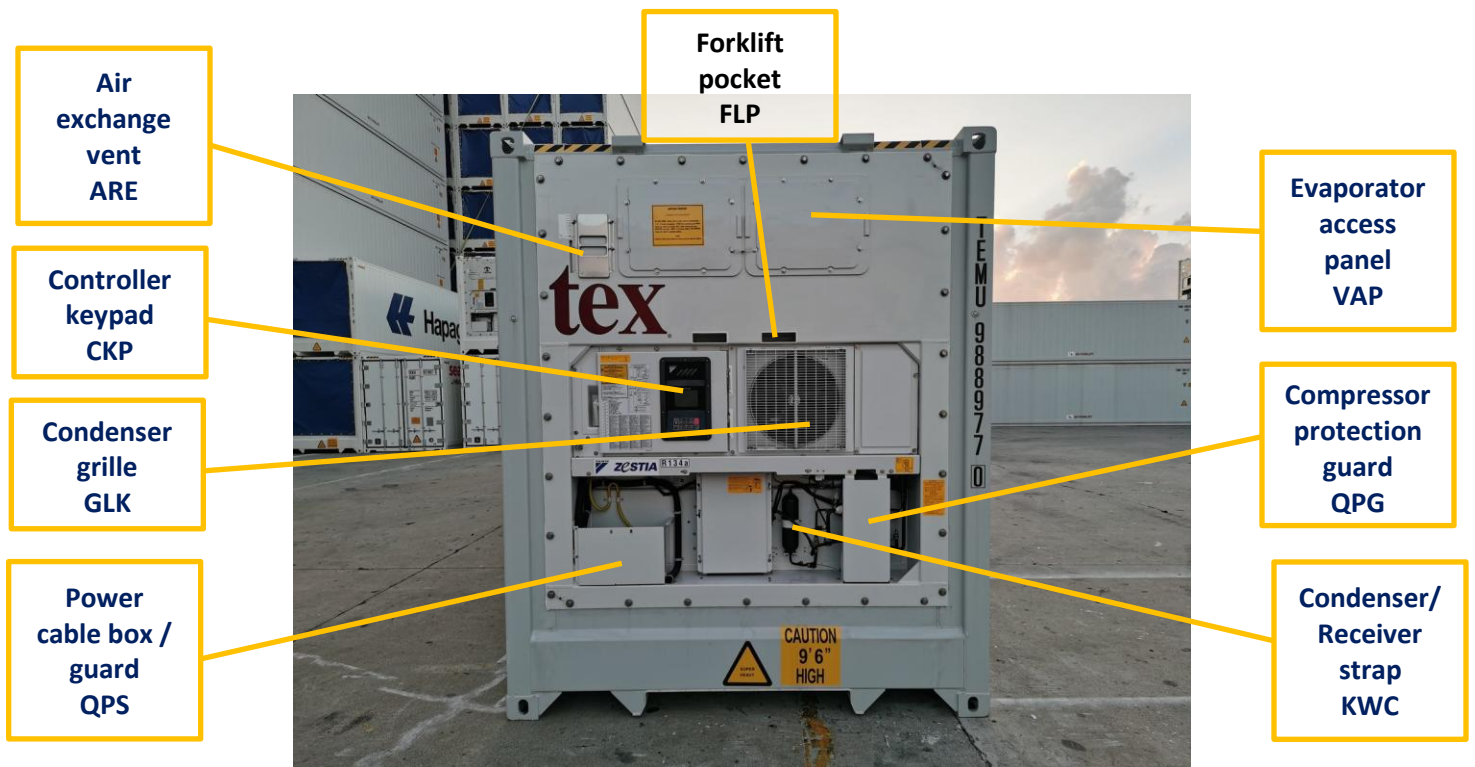
**Subfloor  
PAA**

**Cross-  
member  
assembly  
CMA**





**NOTE:** Considering the large number of machinery components, diversity of manufacturers and models, this document will focus on the more common components among all machine manufacturers for your immediate assistance. The IICL strongly suggests that you refer to the manufacturers' manuals for proper guidance on component names, component locations, and part serial numbers.







Condenser grille  
GLK

Air exchange vent  
ARE

Cable 460 V  
ECB

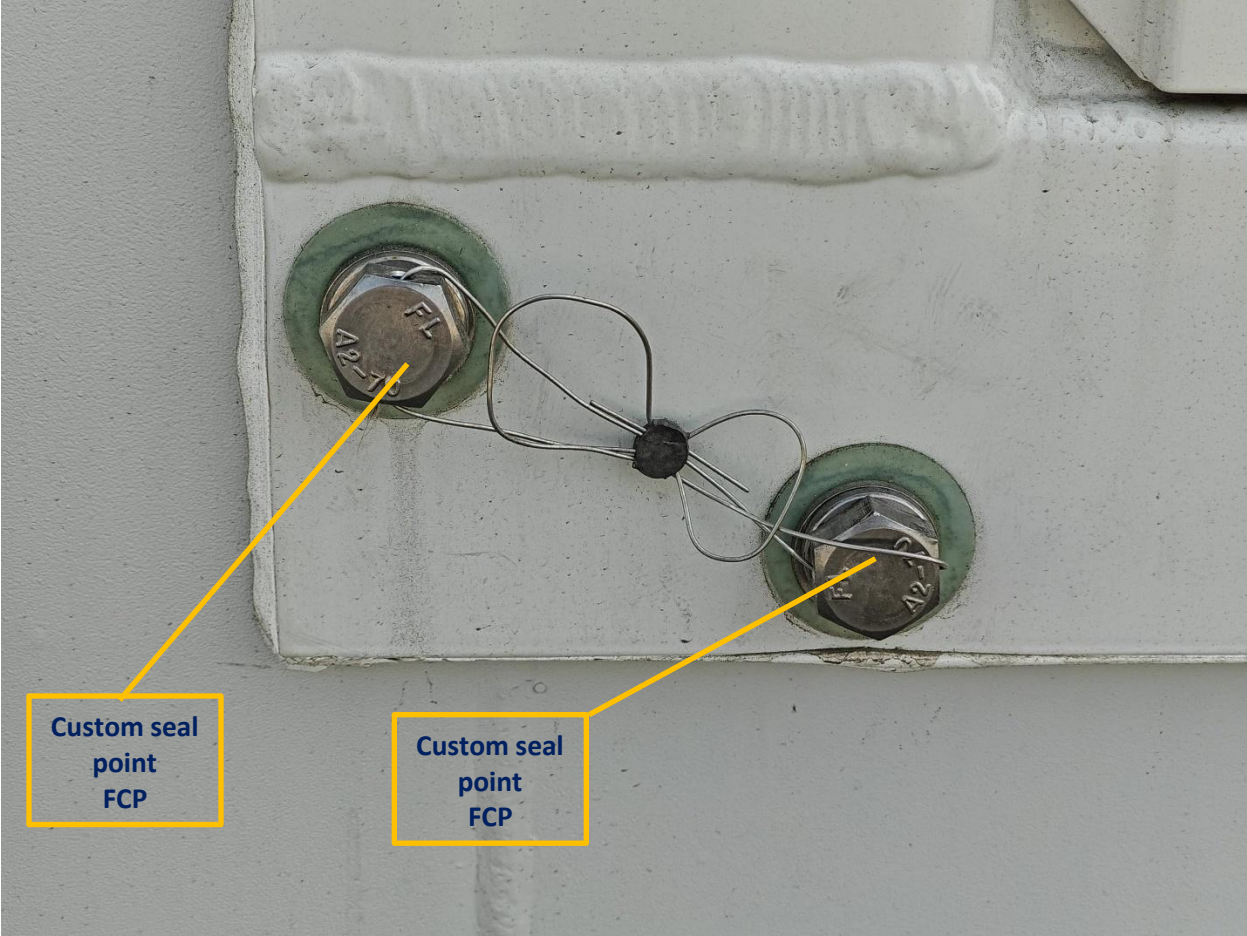
Power cable box /  
guard  
QPS

Compressor  
complete  
ASY

Evaporator  
access  
panel  
VAP

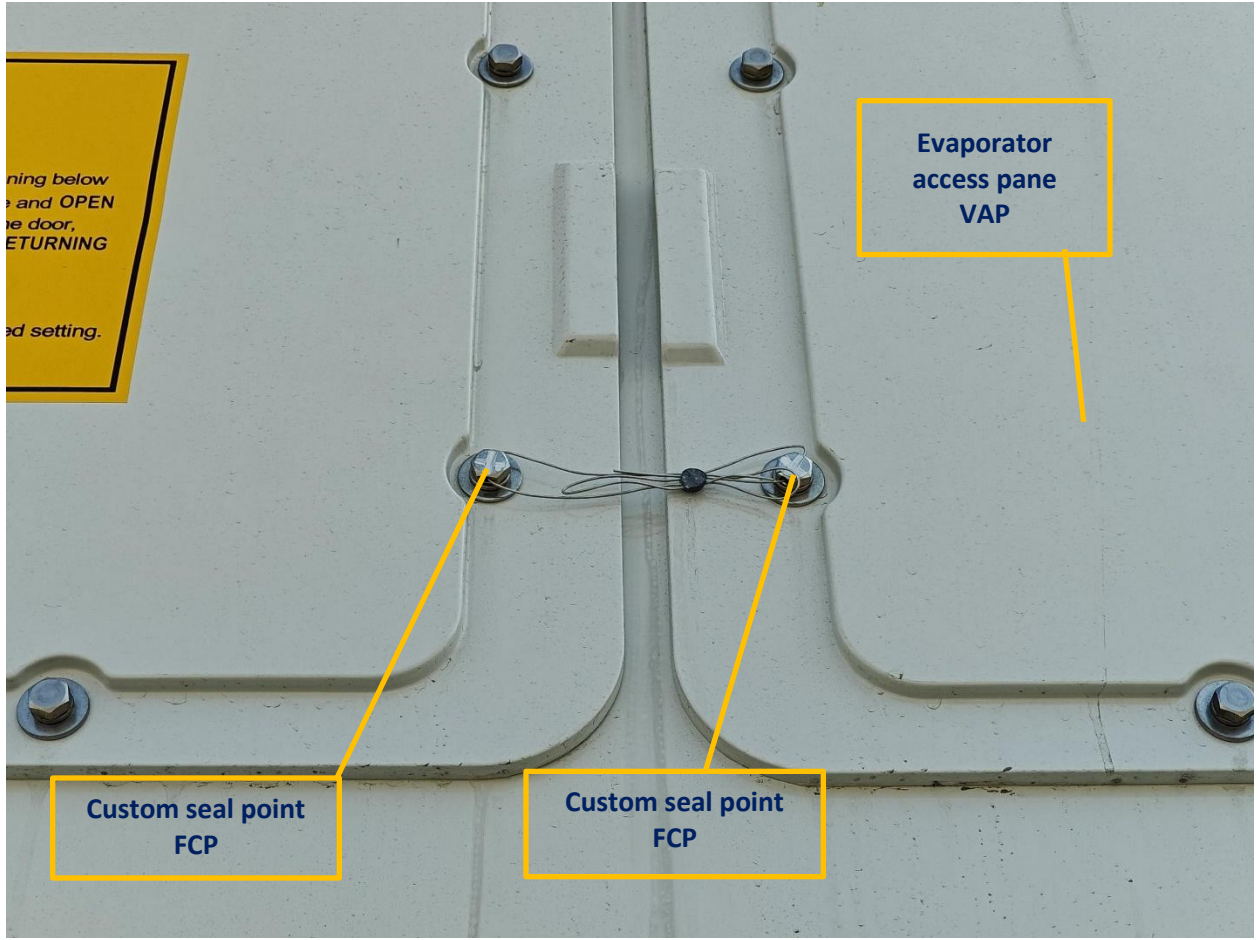
Clip-on gen-  
set clamp  
socket  
COS

Controller  
keypad  
CKP

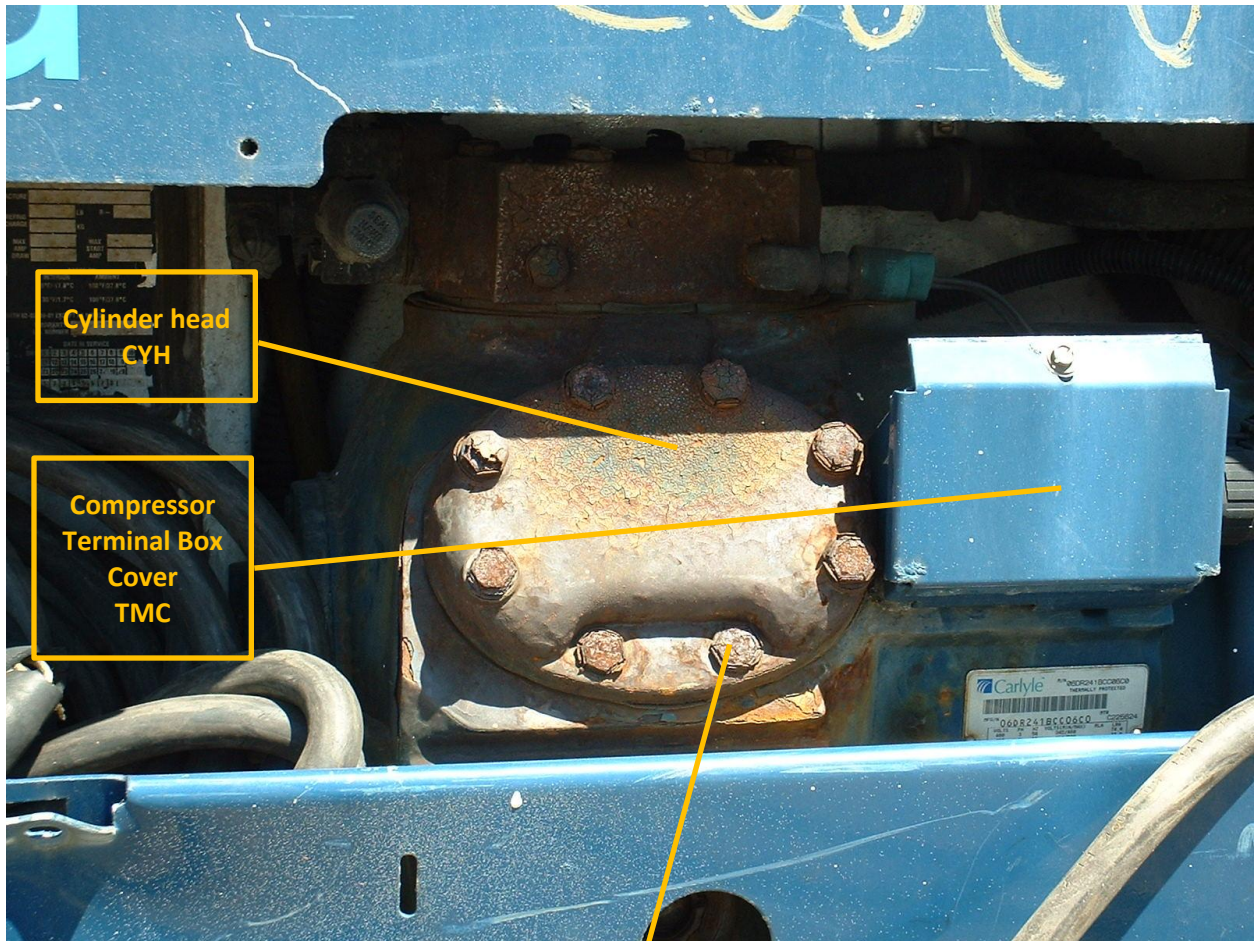


Custom seal  
point  
FCP

Custom seal  
point  
FCP







**Cylinder head  
CYH**

**Compressor  
Terminal Box  
Cover  
TMC**

**Hardware  
HWR**

**Probe Cover  
Refer to  
Manuf.  
Manual**

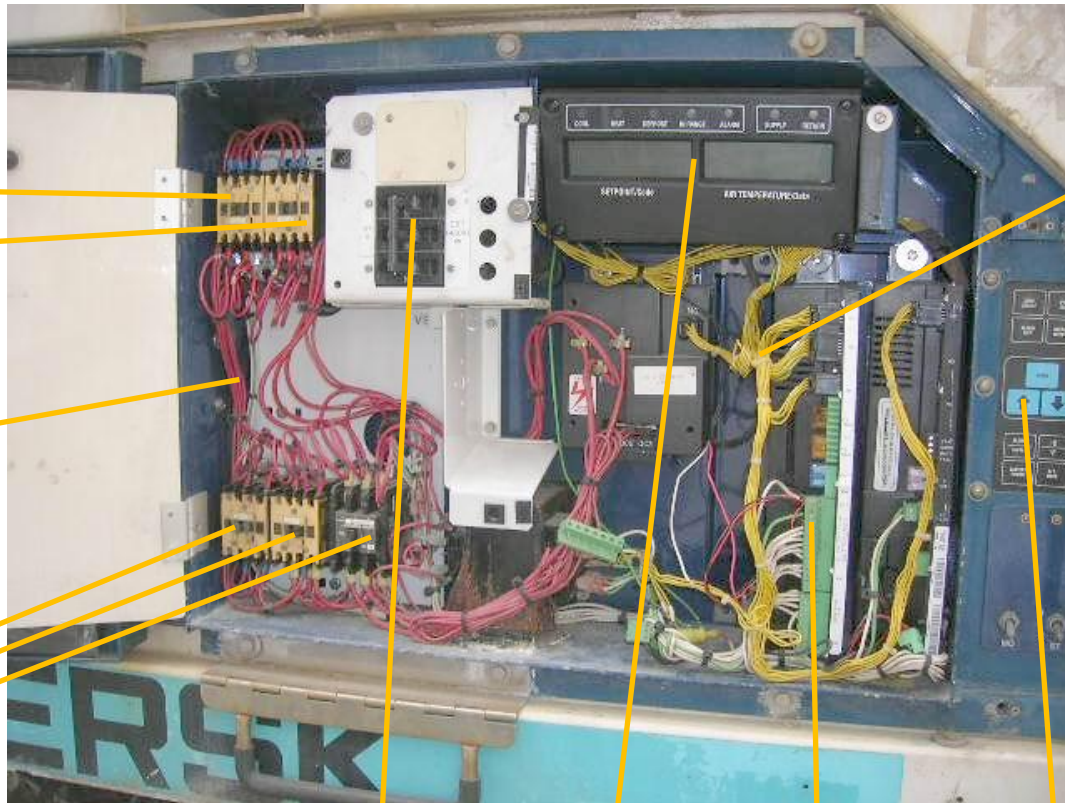
**DSV  
connector cap  
VCC**

**Valve stem  
cap  
KVC**



**Suction  
Modulating  
Valve  
VMA**





Contactors  
Refer to  
Manuf.  
manual

Wiring  
WIR

Contactors  
Refer to  
Manuf.  
manual

Wiring  
WIR

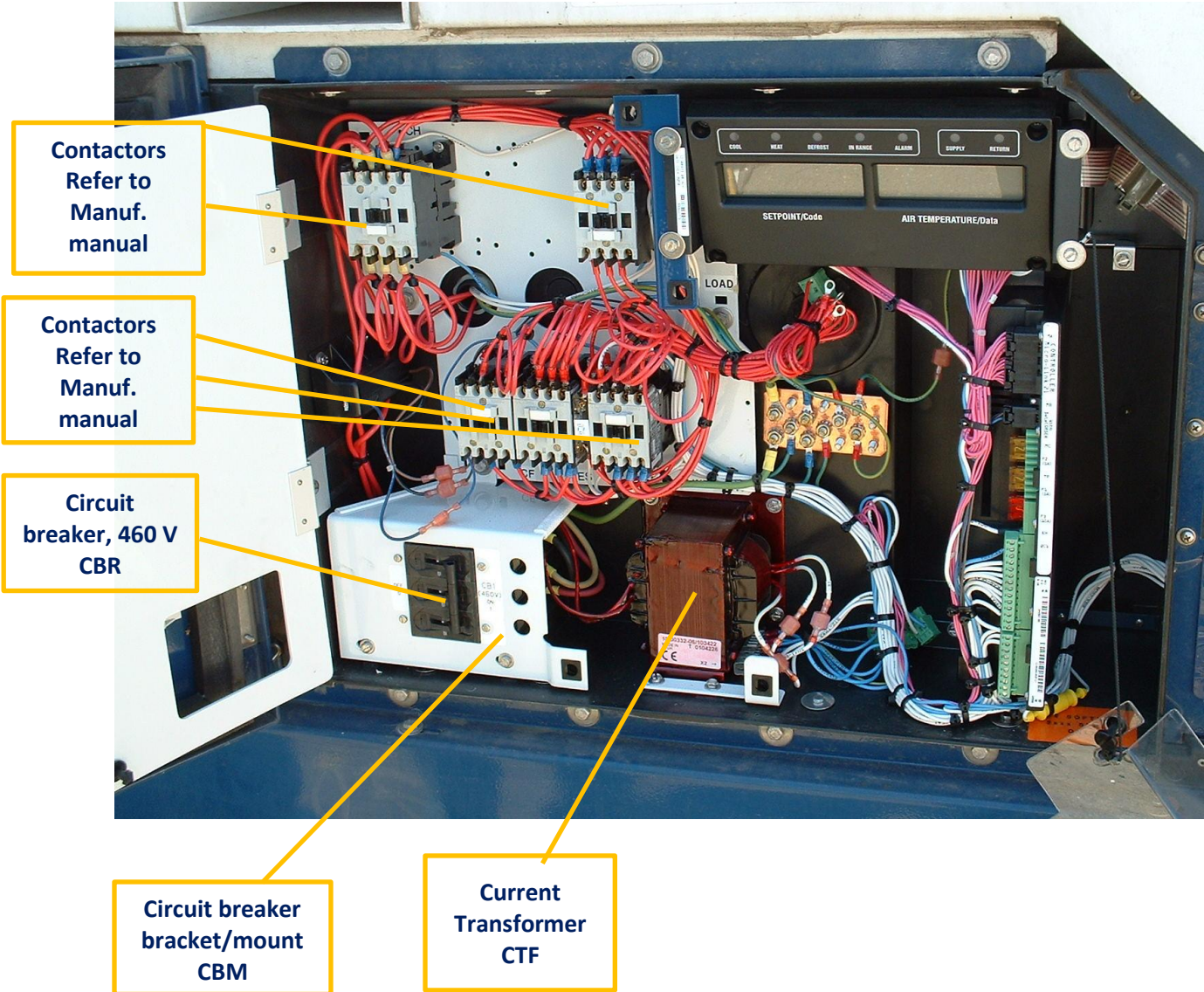
Circuit  
breaker 460 V  
CBR

Display  
assembly  
BDA

Mother  
electronic  
board  
BMN

Controller  
keypad  
CKP

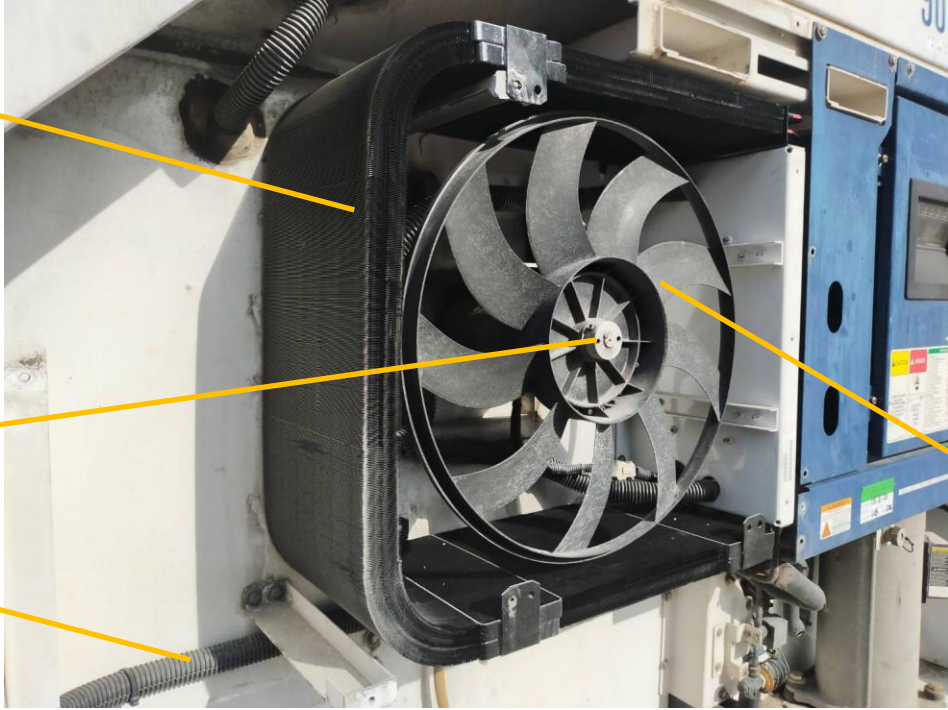




Coil assembly  
condenser  
CSK

Motor -  
condenser fan  
motor  
MKS

Drain tube  
DRN

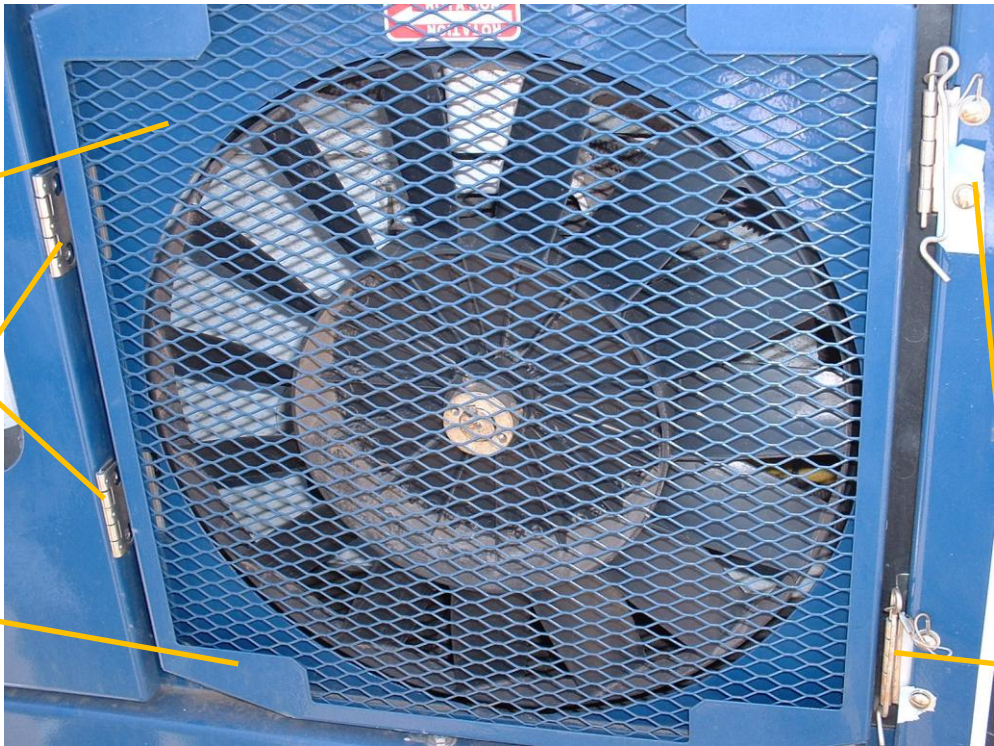


Fan-  
condenser  
motor  
FKN

Condenser  
grille  
GLK

Condenser  
door hinge  
CDH

Condenser  
door panel  
CDP



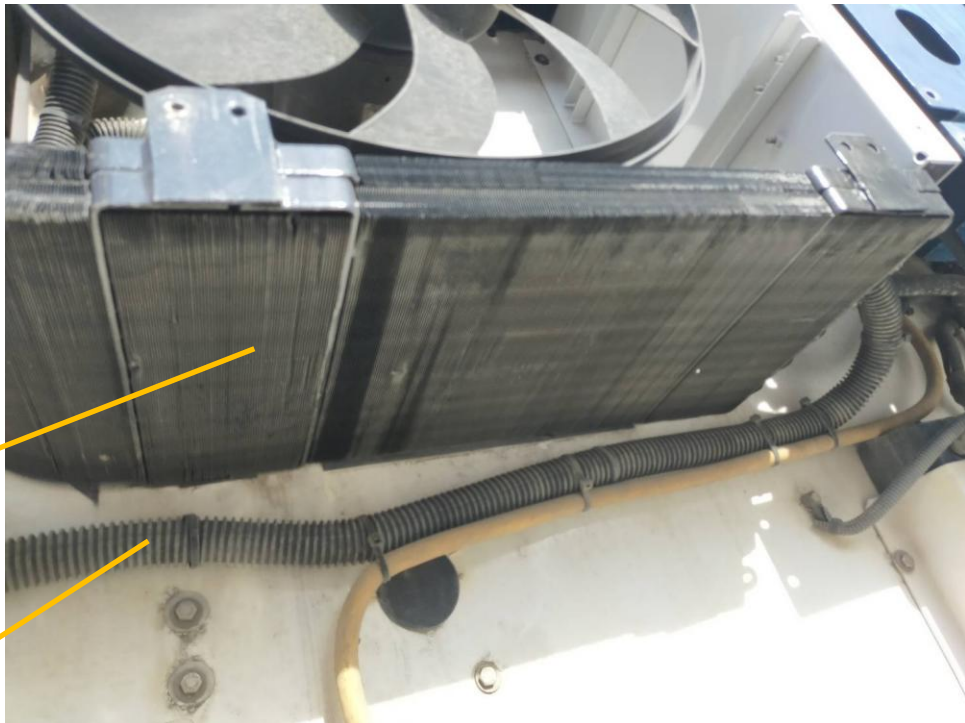
Controller  
cover hinge  
CTH

Fan -  
condenser  
motor  
FKN



Condenser  
coil mounting  
bracket  
CCB

Coil assembly  
- condenser  
CSK

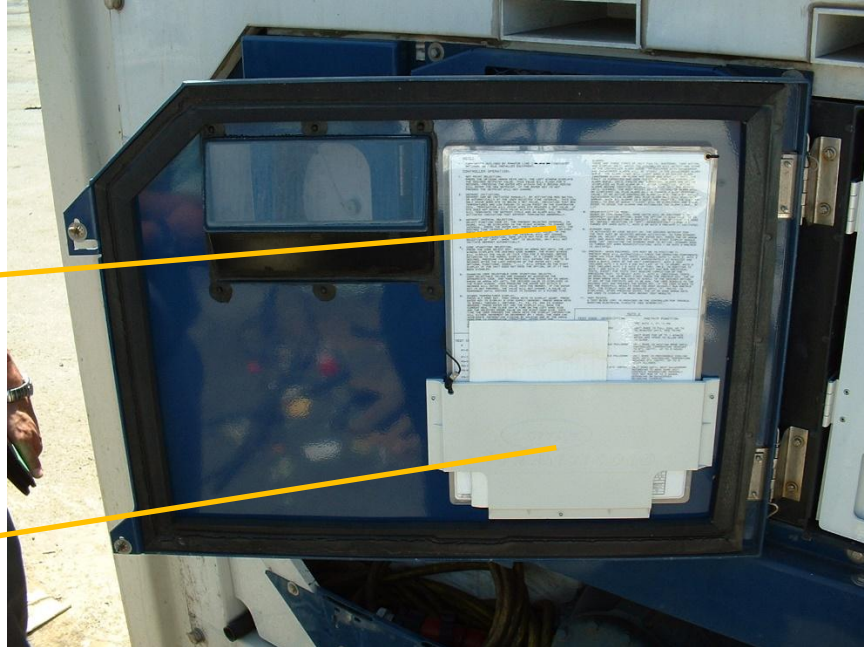


Coil assembly  
- condenser  
CSK

Drain tube  
DRN

**Electrical  
diagram  
EDX**

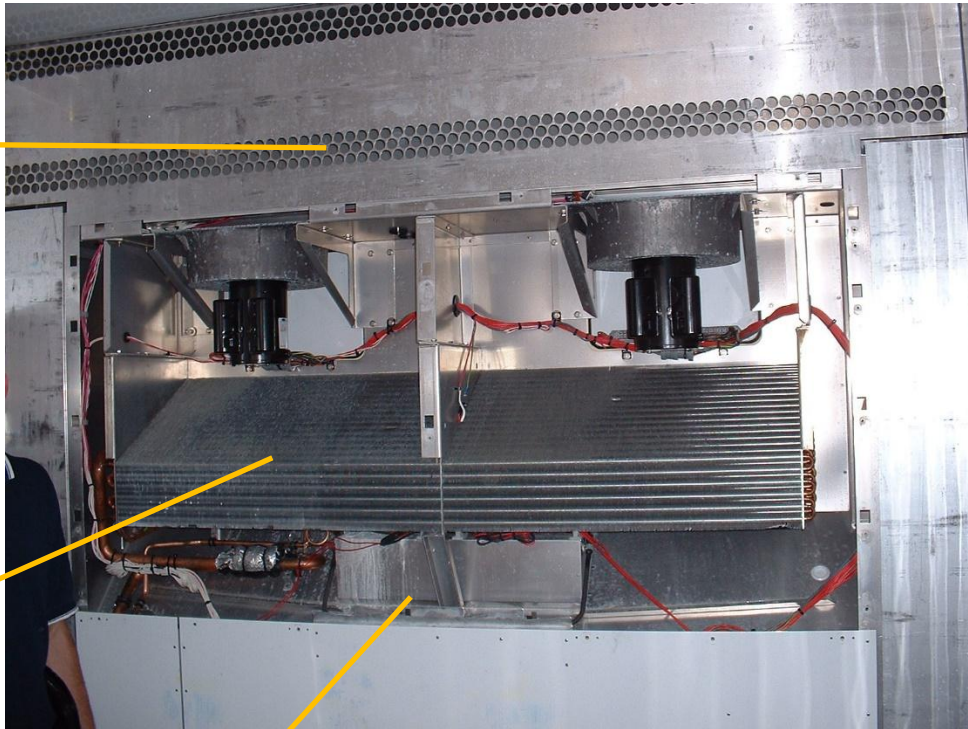
**Electrical  
diagram  
holder  
EDH**

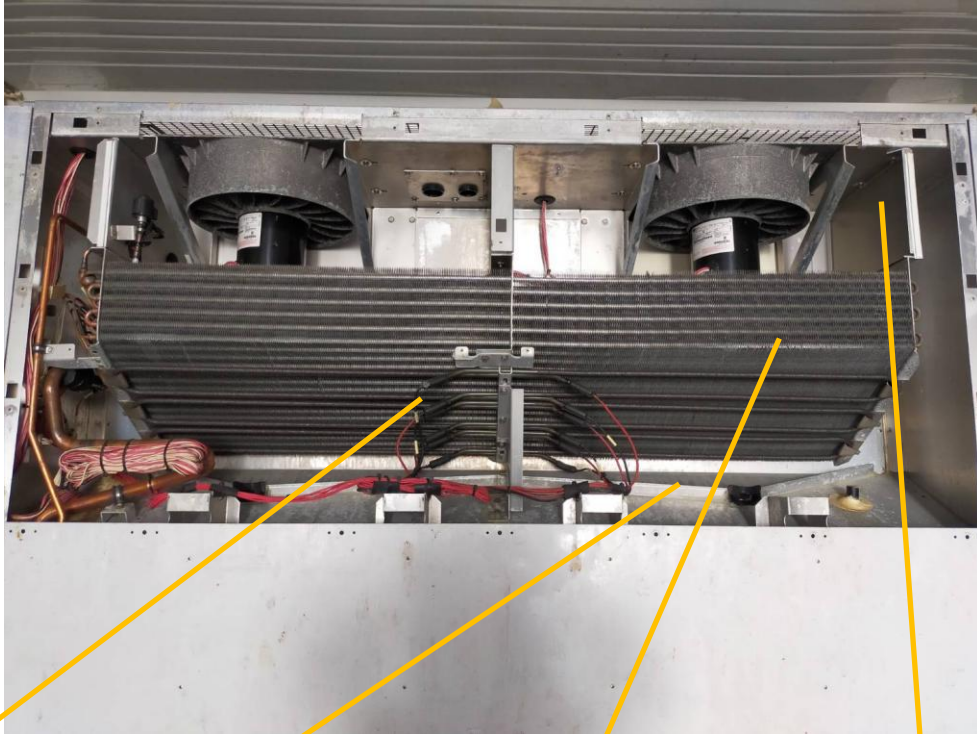


**Evaporator  
grill  
EGT**

**Coil fins –  
evaporator  
CFV**

**Drain pan  
DPA**



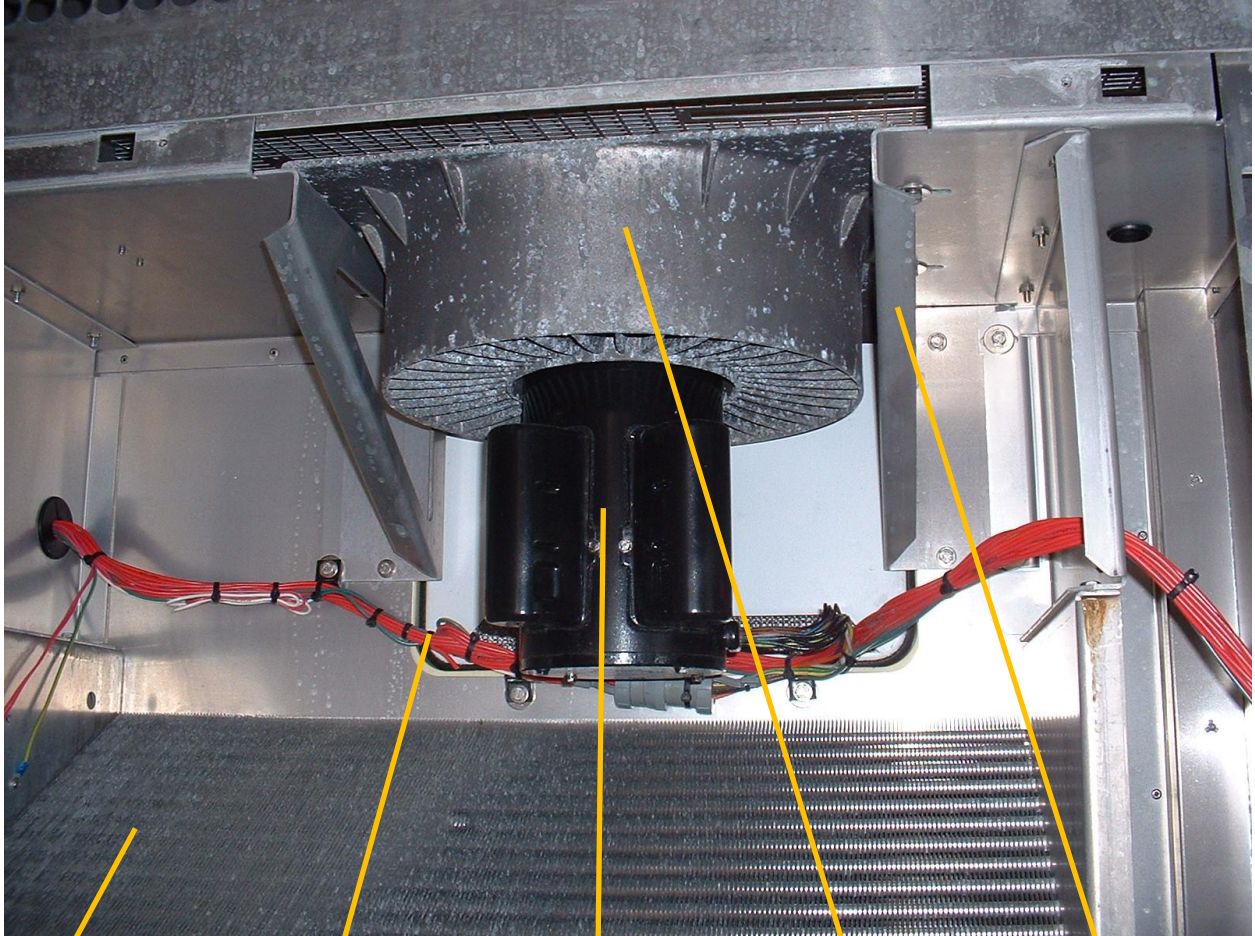


Evaporator  
coil heaters  
HVC

Drain pan  
DPA

Coil assembly  
– evaporator  
CSV

Evap. motor  
mount  
EMM



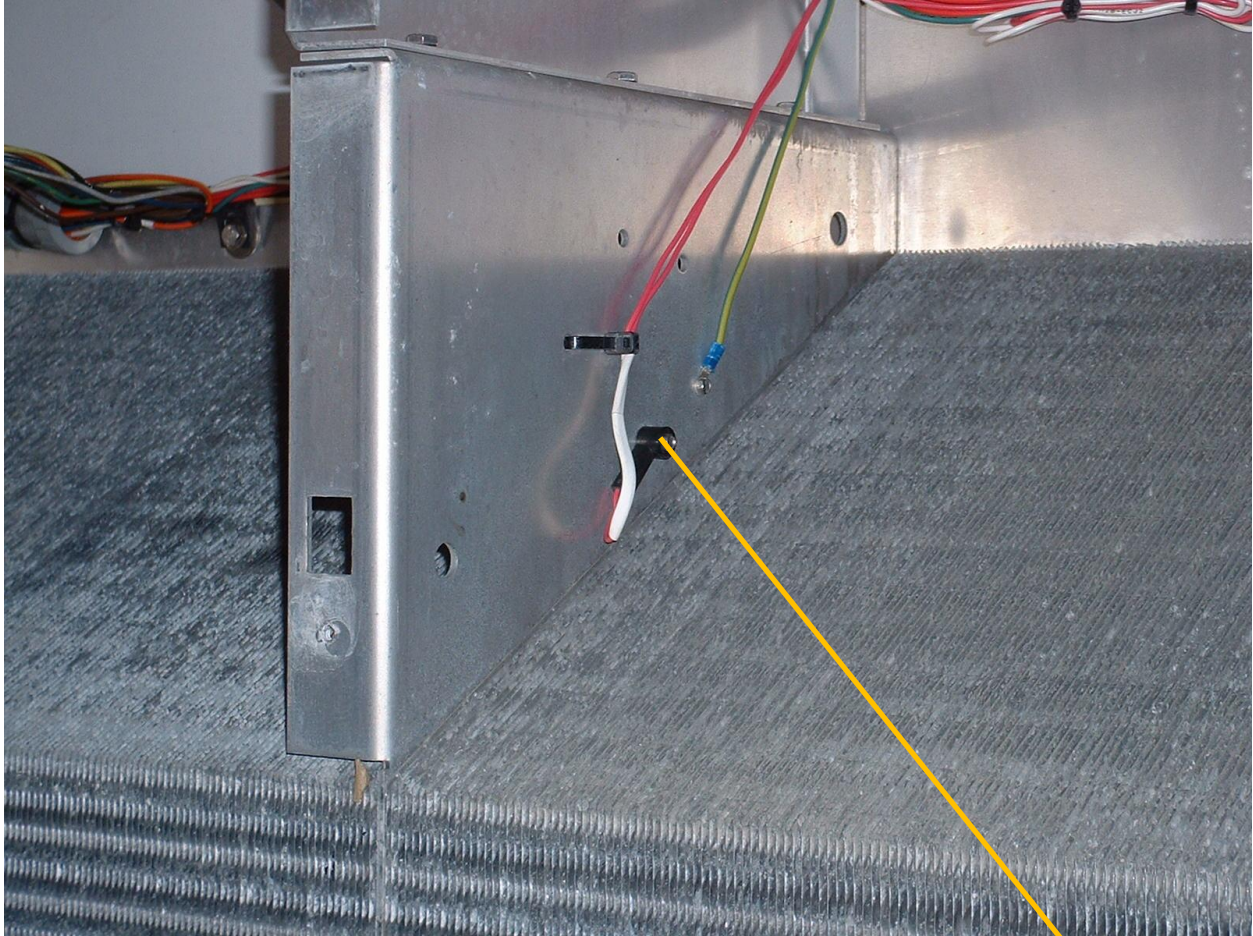
**Coil assembly  
– evaporator  
CSV**

**Evaporator  
motor – elecc.  
Connections  
MVE**

**Motor -  
evaporator  
fan motor  
MVS**

**Evap. fan  
housing  
( right and  
left housing)  
VFH**

**Evap. motor  
mount  
EMM**



Evaporation coil defrost  
temperature sensor  
EVS



**Piping, other  
PMI**

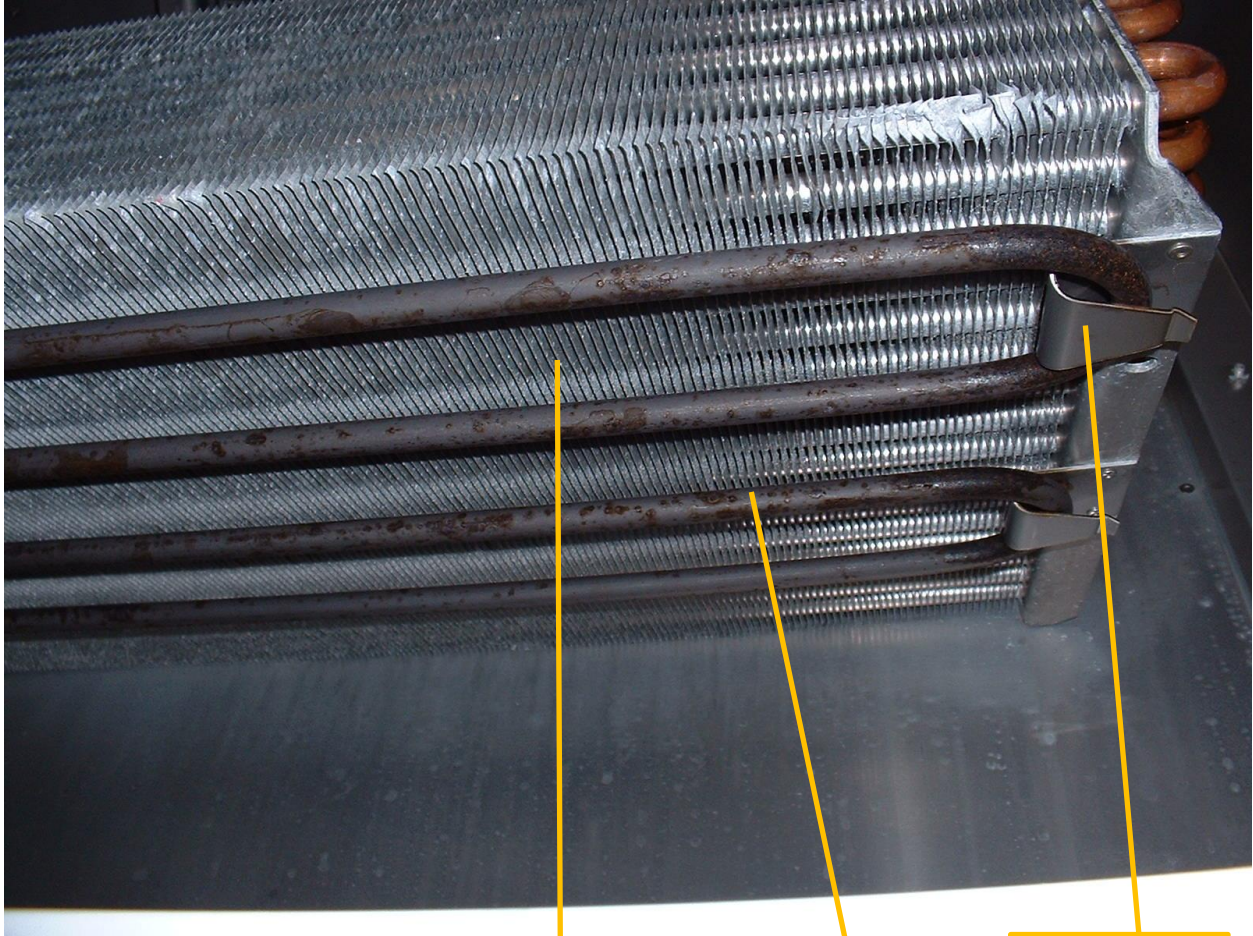
**Support  
bracket, pipe  
system  
TSB**

**Evaporator  
coil heaters  
HVC**

**Evap. fan  
motor –  
bracket  
VFC**



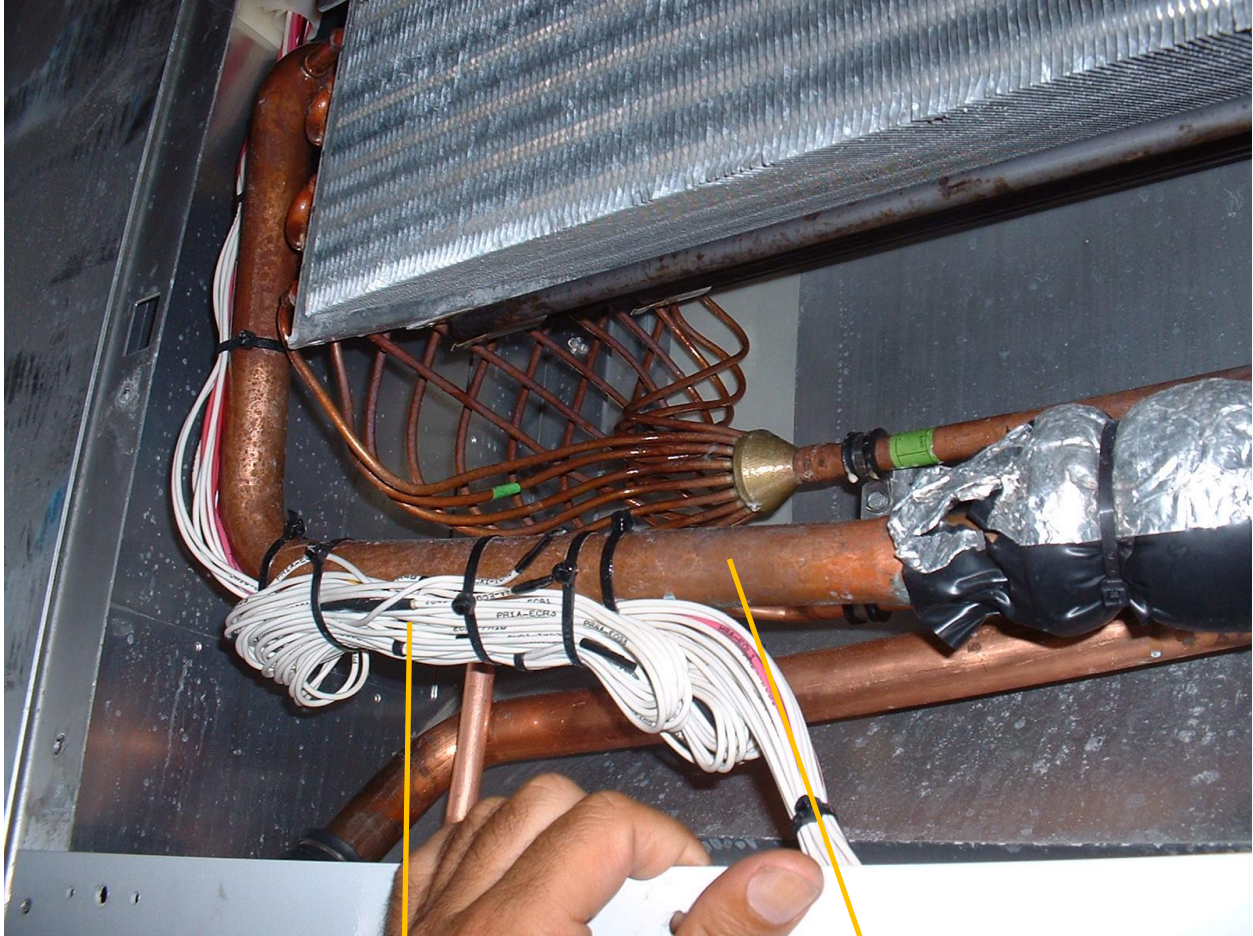
**Drain pan  
DPA**



**Coil fins –  
evaporator  
CFV**

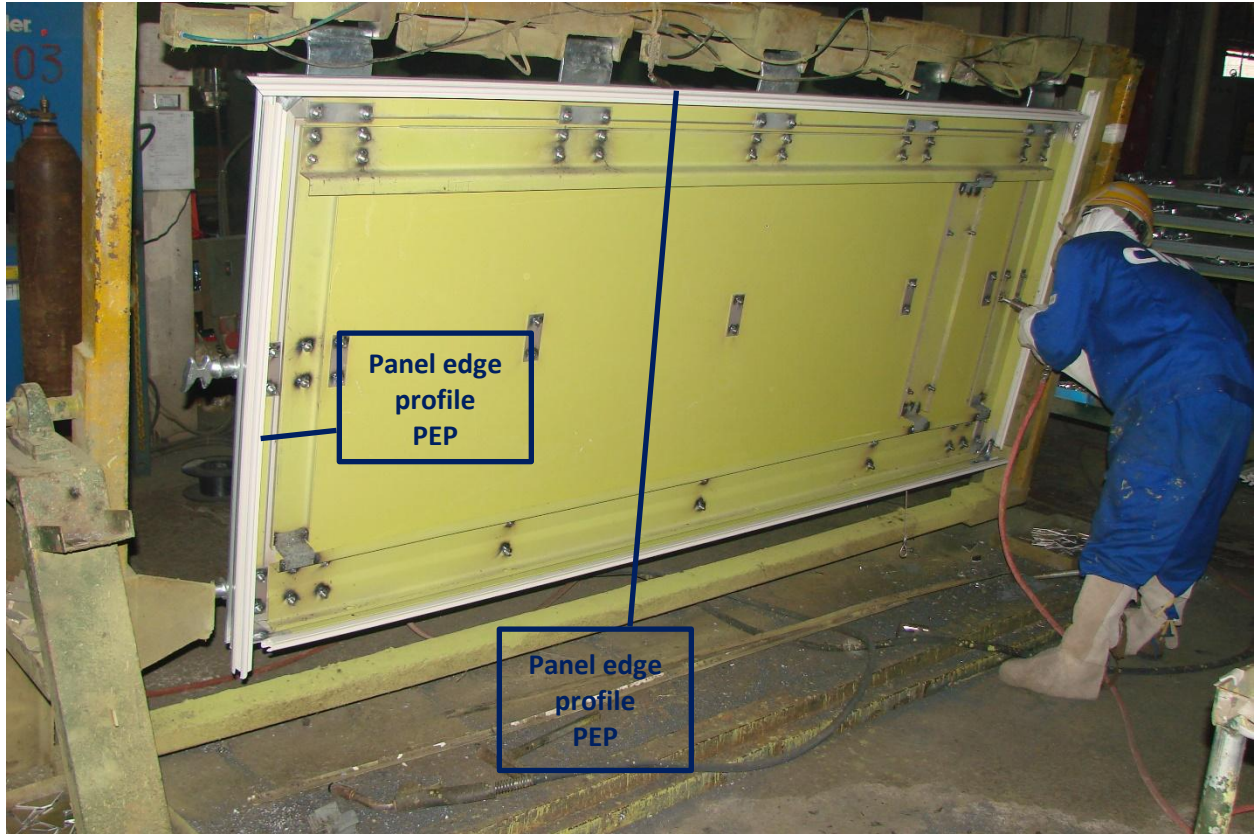
**Evaporator  
coil heaters  
HVC**

**Heater  
holding back  
strip  
HHS**

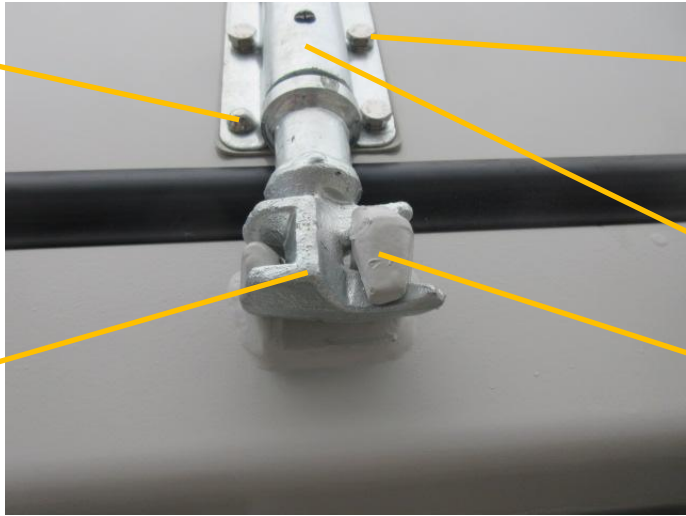


**Wiring  
WIR**

**Piping  
PMI**



**Hardware  
huck bolts  
HWH**



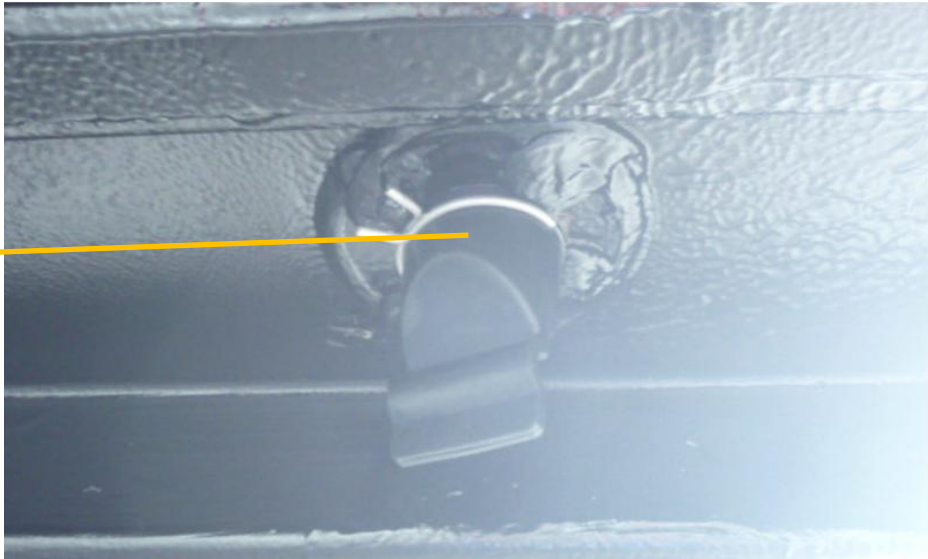
**Hardware  
HWR**

**Locking bar  
bracket  
LBB**

**Locking bar  
cam  
LBC**

**Cam keeper  
RCK**

**Self-  
opening  
drain  
DKK**





**Markings  
MRK**

**Electrical  
diagram  
EDX**

**Controller  
box door  
BCD**