

28 September 2022

## IICL Technical Bulletin - RTB-009

**Background:** Refrigerated containers are being disinfected in China and possibly other locations as a prevention for spreading COVID-19. The chemicals being used are damaging the stainless-steel interior panels, aluminium, and other components within the container.

**Purpose:** Provide inspectors with guidance on how to differentiate damage caused by contamination resulting from the spraying of chemicals in the interior of the container. Units presenting signs of contamination from chemical spraying should have the interior panels, scuff liners, floors examined, and the internal panels removed for detailed inspection of the condition of machinery components.



Minor rusty scratches on the HGSS panels due to loading/unloading operations, Refer to IICL General Guide for Container Cleaning, 3rd Ed.



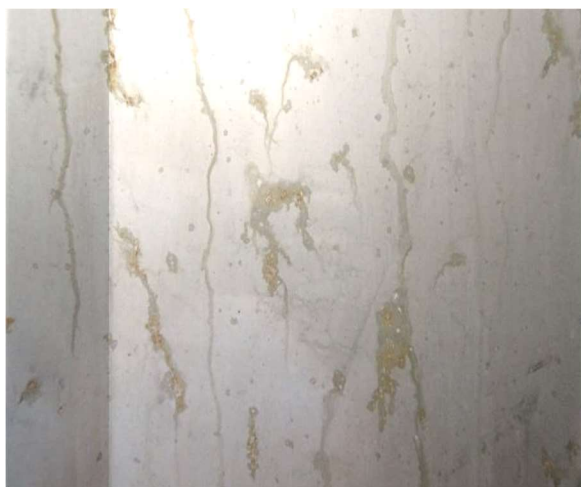
**Superficial rust near the welding seam area, Refer to IICL General Guide for Container Cleaning, 3rd Ed.**



**Contaminated panels showing rust/corrosion marks spread over large areas including weld seams, corrugated and flat surfaces. Above photos depict typical damage caused by contamination as result of chemical spraying. Repair required.**



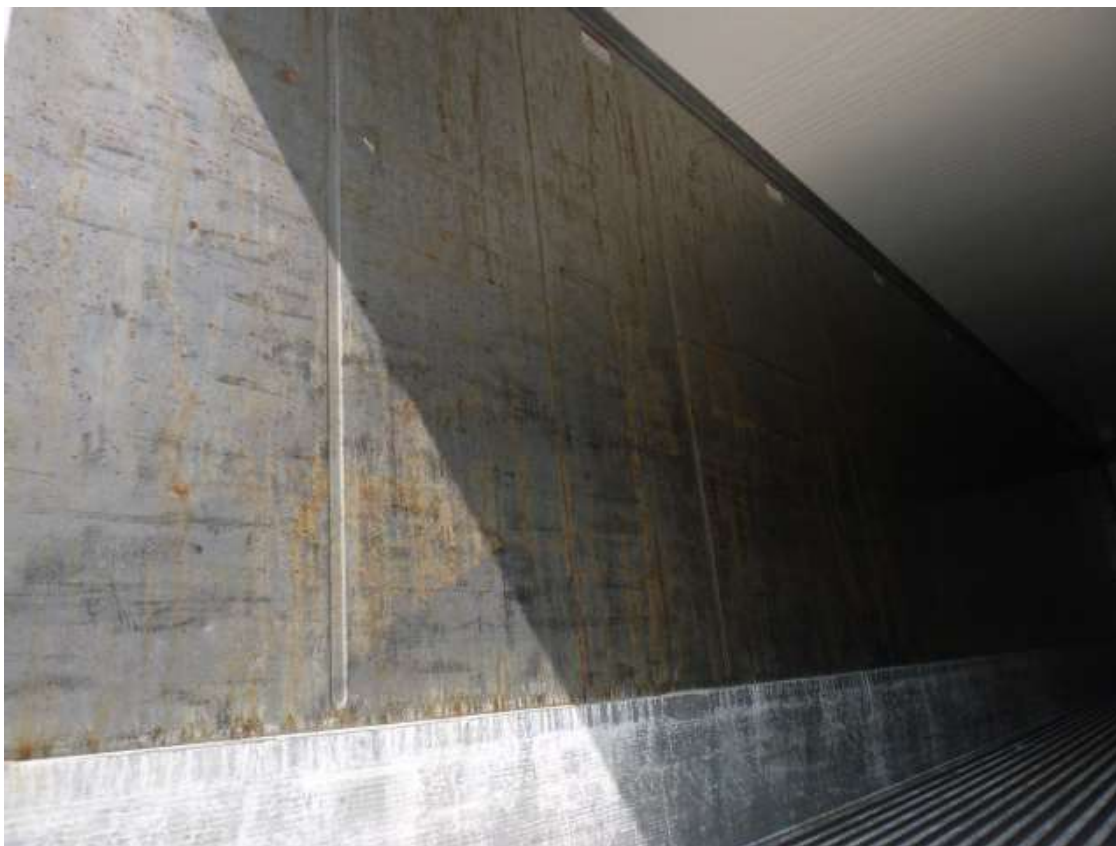
**Contaminated panels showing rust/corrosion marks spread over large areas including weld seams, corrugated and flat surfaces. Above photos depict typical damage caused by contamination as result of chemical spraying. Repair required.**



**Rust/corrosion stains. Above photos depict typical damage resulting from contaminated panels after spraying with harmful chemicals. Repair required.**







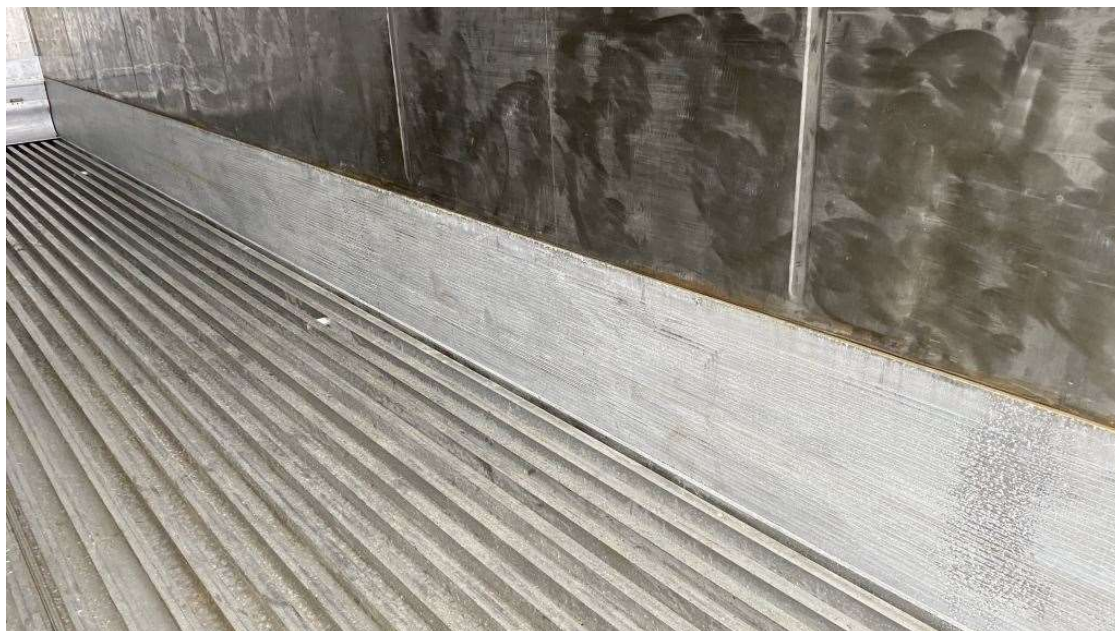
**Contaminated HGSS panels showing corrosion as result of chemical spraying and scuff liner showing severe oxidation and corrosion process due to exposure to chemicals being sprayed. Repair required.**



**Contaminated HGSS panels showing corrosion as result of chemical spraying and scuff liner showing severe oxidation and corrosion process due to exposure to chemicals being sprayed. Repair required.**



**HGSS panels recently polished. Carefully look for existence of pitting, inspect machinery internal components.**



**Contaminated scuff liner showing heavy oxidation and corrosion. Repair required.**





**Contaminated pitting on scuff liner. Repair required.**



**Scuff liner and aluminium T-floor showing oxidation and corrosion as result of chemicals spraying.  
Repair required.**



**Panels, scuff liner and aluminium T-floor showing oxidation and corrosion as result of chemicals spraying. Repair required.**



**Contaminated interior aluminium coving showing oxidation and corrosion due to chemical spraying. Repair required.**

**This Technical Bulletin was prepared under the supervision of the IICL Technical Committee.**

**As more information becomes available on this subject, the IICL will update these guidelines accordingly.**

**End.**