



**DRY VAN CONTAINER INSPECTOR'S  
CERTIFICATION EXAMINATION**

**TEST INFORMATION BULLETIN**

**Examination Dates:**

**Any available date until 31 December 2023**

***NOTE: You must completely register for the exam before the deadline to ensure you have enough time to schedule an examination date appointment.***

**IMPORTANT DATES FOR THE EXAMS**

**Registration & Payment Deadlines**

<b>REGISTRATION FEE &amp; DEADLINE</b>
<b>\$475.00 USD</b>
<b>29 December 2023</b>

**Scholarship Application Deadline: N/A**

If you wish to apply for a scholarship, see the instructions on page 3 and complete Scholarship Application Form.

**INFORMATION BULLETIN TOPICS**

Page 2	General Information	Page 4	Testing Day Procedures
Page 2	Description/Prep Course for Exam	Page 4	Certificates/Inspector Directory Listing
Page 3	Registration/Test Center Info	Pages 5-6	Content Outline for the Examination
Page 3	Scholarships	Page 6	Online Preparatory Course for Exam
Page 3	Refunds/Cancellation Fee Schedule	Page 7-11	Sample Questions and Answer Key
Page 3	Absence/Substitutions	Page 12	Exam Format General Information

**KEEP THIS BULLETIN.** Carefully read the Bulletin. It has important information you will need for future reference.

**Each 2023 candidate must review and carefully read, print or download this Test Bulletin.**

## GENERAL INFORMATION

The Institute of International Container Lessors (IICL), organized in 1971, is the trade association for the international container leasing industry. It is active in governmental, regulatory, safety, technical, electronic communication, and environmental fields throughout the world. The members of IICL are engaged in leasing marine cargo containers to ship operators and others on a broad international basis. These members represent a significant portion of the global leased container and US chassis fleets of the leasing industry and account for the ownership of approximately fifty percent of the world's leased containers.

**REQUIREMENTS FOR CERTIFICATION** The examination is open to anyone interested in becoming IICL-certified as a container inspector. IICL certification is awarded to all candidates who pass the examination and is valid for five years. An inspector must pass the examination again before certification is reissued. Certification does not authorize an individual to represent IICL in any manner. Certification may be revoked by IICL for any of the following reasons: willfully falsifying information on the registrations, making unauthorized material available to others, taking the examination on behalf of another person or misuse of certification.

**DESCRIPTION OF THE EXAMINATION** The 2 hour container inspector certification examination will be a **computer based examination** provided at numerous active proctored test centers around the world, the exam will consist of **100 multiple-choice questions in English or Spanish and it is a closed book examination.**

Visit <http://iicl.org/education/certification.cfm> to view the locations by clicking ACTIVE TEST CENTER SEARCH. Every registrant will be notified on how to schedule their exam once they complete the online registration. Candidates will have the option to reserve their exam for any available date between **Friday, 20 January 2023 and Sunday, 31 December 2023.** Early registrants will be given priority for reservations.

The exam is based on the following IICL Dry Van Publications and the IICL Technical Bulletins (available electronically) excluding TB-001 in page <https://www.iicl.org/technical-documents/dry-van-technical-bulletins/>

Visit <https://www.iicl.org/store/storeform.cfm> to purchase the publications required to study for the IICL Dry Van Container Inspector Certification Examination:

1. *Guide for Container Equipment Inspection, 6th edition (IICL-6)*
2. *Repair Manual for Steel Freight Containers, 5th edition*
3. *General Guide for Container Cleaning, 3rd edition*
4. *Supplement on Container Inspection and Repair: Gray Areas, 2<sup>nd</sup> edition* (published 2003)
5. *Dry Van Technical Bulletins (excluding TB-001) are available for download at no cost at <https://www.iicl.org/technical-documents/dry-van-technical-bulletins/>*
6. *Dry Van Container Exam Simulator (free) - <https://www.iicl.org/certification/iicl-exam-simulators/>*

***Participants should be familiar with all of the technical bulletins.***

**OPTIONAL (but recommended)** The **IICL Online Preparatory Course & Assistant for the IICL DRY VAN Inspector Container Certification Examination** was developed to assist individuals preparing to take the exam. The online training course consists of 3 modules having slides and movies addressing inspections, repairs including proper inspection practices and recommended repair criteria selection. The training modules are based on the latest guides for container inspection, repairs and technical bulletins. A test simulating the exam is built into the training module enabling students to evaluate their knowledge. The course is available as [stand-alone item](#) for \$99 USD or as part of a [bundle with the container inspector certification examination](#) for \$574 USD. The course can be completed in about 3 hours, it is recommended that students study the manuals after each session to reinforce the understanding over each of the areas covered. **To register visit: <https://www.iicl.org/education/certification.cfm>**

**NOTE: The IICL Online Preparatory Course is NOT a substitute for the Container Inspector Certification Examination. All who wish to certify will still need to register and participate in the IICL Container Inspector Certification Examination.**

**REGISTRATION/SCHEDULING-** registrations & fees must be received ASAP to ensure seating.

- **Complete the registration online electronically-** <https://www.iicl.org/education/certification.cfm>
- **Registration Fees.** Registrations that have not been paid will remain pending until payment is received.
- **Registration Notification.** Notification of Registration is sent by e-mail upon registration completion online. When you submit and complete your online registration you will receive an automated examination **Member ID Number**. Contact IICL if you do not receive a prompt automated online notification via email to ensure IICL received your registration. Please check all junk and spam folders for the online registration confirmation.

**TEST CENTERS** - Please visit IICL web page <http://iicl.org/education/certification.cfm>

**REGULAR TEST CENTERS** The examination is administered at sites around the world. If the test is cancelled by the testing center, IICL will allow test candidates to take the test at another location or reschedule the exam.

**SCHOLARSHIPS****Application deadline Sunday, 30 April 2023**

Each year, IICL awards up to three scholarships worldwide based on need. Each scholarship will include the registration fee and a full set of examination manuals. Applicants must complete a scholarship form, submit documentation of financial need (such as copy of tax form or proof of salary) and a short essay per the instructions on the application. The form and essay must be written in English only, and can be typed or handwritten (if legible). The essay must be written in the applicant's own words. Applicants will be judged on the *content* of their application and on their need for a scholarship, and **not** on how well they write English.

- IICL will only accept **one** scholarship application from any one company.
- If you are not selected for the scholarship, you may still register and participate for the exam.

**REFUND POLICIES and CANCELLATION SCHEDULE**

Registrations may be cancelled before the examination date; however, all fees for candidates canceling before the test date will be refunded according to the schedule below. **Refunds will only be made if a candidate notifies IICL prior to one of the cancellation dates by e-mail at [info@iicl.org](mailto:info@iicl.org)**

**CANCELLATION FEE SCHEDULE****Cancellations until 31 October 2023:**Registration fee refunded minus **\$100.00** cancellation fee**Cancellations from 1 November thru 30 November 2023:**Registration fee refunded minus **\$200.00** cancellation fee**NO REFUNDS AFTER 30 NOVEMBER 2023****ABSENCE**

If a candidate does not cancel on or before 30 November 2023, the entire test registration fee may be forfeited. It is the responsibility of candidate or their representative to notify IICL of any cancellations before the exam date or deadline.

**SUBSTITUTIONS****Deadline: 15 December 2023**

If a candidate is unable to sit for the exam and wishes to substitute another candidate from the same company for the examination, the substitute candidate must e-mail [info@iicl.org](mailto:info@iicl.org) the substitutes name and email address along with the current candidates name, purchase confirmation/order number and test center city to be replaced at no additional cost.

## TESTING DAY PROCEDURES

Report to the assigned test center on the selected date, follow any instructions given and please be prompt!

### WHAT TO BRING TO THE TEST CENTER

- 2 Forms of picture ID, Recent (current) and valid photo-identification, such as a government issued ID, a passport or driver's license. Anything else required and outlined by PearsonVue in the examination reservation confirmation.

**REGULATIONS AT THE TEST CENTER** To ensure that all candidates are tested under equally favorable conditions, the following regulations and procedures will be observed at each center.

- NO beepers, cellular telephones, books or papers of any kind are allowed in the examination location. This means that NO dictionaries can be brought into the testing room. IICL suggests that non-English-speaking candidates memorize the names of container components, procedures and materials as provided in the IICL manuals, and also the "English words and phrases" on page 10.
- Candidates needing to use the restroom during an examination must secure permission from the supervisor.
- Candidates discovered engaging in any kind of misconduct, such as giving or receiving help, talking during the examination, taking part in an act of impersonation, or removing test materials or notes from the testing room, may be summarily dismissed from the examination and will be reported to IICL.
- There are no Interpreters admitted to the exam test center.

**TEST SECURITY PROCEDURES** Any doubts raised about the validity of an individual candidate's score will be thoroughly investigated. Some scores may be rendered invalid because of circumstances beyond a candidate's control. When such circumstances are discovered, IICL will arrange a makeup administration for the candidates concerned at no charge. If misconduct (such as giving or receiving help, attempting to take the examination for someone else, or removing test materials) is suspected, IICL will investigate all circumstances of the case. As a result, scores may be delayed in being reported.

## CERTIFICATES and CONTAINER INSPECTOR DIRECTORY LISTING

**NOTE:** Exam scores for the test takers are now automated and will be posted in the "My Transcript" section of each candidates IICL User Account within 2 days after you take the exam. You will need to log back into this education portal and sign into your user account to view your score. If you pass the examination you will have the capability to print your own certification. Visit <https://testing.iicl.org/login/> sign-in and click on "My Transcript" to view your score. The passing score for the dry van container certification examination is 70%.

All candidates who pass the examination will receive an IICL Marine Cargo Container Inspector's Digital Certificate confirming their certifications.

Certified inspectors' names are published annually in the IICL *Inspection Directory* which is posted on IICL's website. All candidates will have to visit the *Inspection Directory* via <http://www.iicl.org/directory/inspectorsSearch.cfm> and edit/update their data. The *Inspection Directory* will be updated via for all passing candidates to view/update within 3 weeks after the examination date.

For candidates receiving a score of 90% or higher, IICL awards an Honor's Certificate.

## **CONTENT OUTLINE FOR THE CONTAINER INSPECTOR'S EXAMINATION**

Candidates should be familiar with all recommendations and information contained in the following publications:

### 1. ***Guide for Container Equipment Inspection – 6<sup>th</sup> edition*** (IICL-6) (2016)

The Guide recommends criteria and methods for the inspection of containers and contains:

- Purpose of container inspection and role of inspector
- Definitions and types of wear, damage and non-conforming repair
- International requirements (CSC, TCT, TIR, etc.) and inspection documentation (EIR, EDI, etc.)
- Correct inspection procedures
- Container design features (candidate must be able to identify container components)
- Glossary of container terminology

Candidates should understand how to interpret the ISO dimensions (including plus or minus allowances), but need not memorize specific ISO dimensions, as an ISO chart will be printed in the examination booklet. (IICL tolerances will not be provided.)

### 2. ***Repair Manual for Steel Freight Containers, 5<sup>th</sup> edition*** (Reprinted 2006)

The fifth edition of the Repair Manual contains recommendations for the repair of steel containers, many presented by means of color photographs. The following is included:

- International requirements and safety requirements
- General repair principles and procedures from straightening to component replacement, including surface preparation, welding, fasteners, etc.
- Specific rules and special considerations for repair of individual container components. Candidates must be able to recognize *incorrect* procedures as well as correct ones. All diagrams must be studied.
- Materials and tools recommended by IICL for repair
- Safety precautions and quality assurance
- Non-conforming and improper repairs
- Terminology and interpretation of ISO dimensions, including gooseneck tunnels and forklift pockets

The Repair Manual (reprinted 2001) includes information from *Technical Bulletin S2* (2000) as follows:

- Surface preparation, including full abrasive blasting and spot blasting
- Environmental and safety considerations
- Post blast requirements
- Application of prime coat, intermediate and top coating
- Paint drying times
- Undercoating

Technical Bulletin S2 (published 2000)

- If you are using a *Repair Manual for Steel Freight Containers, 5<sup>th</sup> edition* (1999) purchased prior to June 6, 2000, you may download *Technical Bulletin S2* from IICL's website at [www.iicl.org](http://www.iicl.org). The Bulletin includes the information noted above under the *Repair Manual for Steel Freight Containers, 5<sup>th</sup> edition* (reprinted 2001) description.

### 3. ***General Guide for Container Cleaning, 3<sup>rd</sup> edition*** (revised 2020)

This Guide provides a series of color photographs illustrating the types of container conditions in dry-van, open-top and refrigerated containers that may or may not require cleaning. For each condition, the Guide recommends the action to be taken, if any, and the cleaning procedure to use, if the container requires cleaning. Areas covered include:

- General objective
- Safety and environmental concerns, general principles for determining when to clean
- ALL conditions for dry-vans, open-tops and refrigerated containers shown in the Guide and

- recommended actions, if any
- Possible harmful contamination and recommended action
- Recommended cleaning methods for all types of conditions. Candidates must know which method is recommended for each type of condition listed.

4. ***Supplement on Container Inspection and Repair: Gray Areas, 2<sup>nd</sup> edition*** (published 2003)

This Supplement is designed to clarify areas of container inspection and repair that have been open to interpretation. Color photographs illustrate recommendations. Areas covered include:

- How to determine if a condition requires repair; how to distinguish between damage and wear
- Determining causes of damage; judging if a repair is acceptable
- Floors: cracks, splits, broken planks, delamination, rolling shear and other conditions
- Scratches and other abrasions on interior walls
- Door gasket seal; frame members: metal loss due to corrosion
- Improper repairs: panel straightening, different roof corrugation profiles, pre-existing conditions

***All active IICL Dry Van Technical Bulletins currently listed on our website are study references available electronically. Participants should be familiar with all technical documents.***

***Please visit <https://www.iicl.org/technical-documents/dry-van-technical-bulletins/> to download and review the technical bulletins.***

*Dry Van Container Exam Simulator (free) - <https://www.iicl.org/certification/iicl-exam-simulators/>*

### **IICL Online Preparatory Course for the IICL Container Examination**

**To register for the preparatory course please visit: <https://www.iicl.org/education/certification.cfm>**

**NEW!** The IICL Online Preparatory Course for the IICL Container Examination was developed to assist individuals preparing to take the exam. The online training course consists of 3 modules with slides and movies addressing inspections, repairs including proper inspection practices and recommended repair criteria selection.

The IICL Online Preparatory course is available as [stand-alone item](#) for \$99 USD or as part of a [bundle with the container inspector certification examination](#) for \$574 USD. The course can be completed in about three hours, however, it is recommended that students take the time to study the manuals after each session to reinforce the understanding over each of the areas covered.

The training modules are based on the latest guides for container inspection, repairs and technical bulletins. **A test simulating the exam is built into the training module enabling students to evaluate their knowledge.**

**NOTE: The IICL Online Preparatory Course is NOT a substitute for the Container Inspector Certification Examination. All who wish to certify will still need to register and participate in the IICL Container Inspector Certification Examination.**

## SAMPLE QUESTIONS

Exam general directions: Each of the 100 questions or incomplete statements below is followed by 4 suggested answers or options. Select the one that is best in each case. Choose only **ONE** option per question and try to answer ALL questions (the passing score of 70 is based only on the number of questions answered correctly).

Please be very careful when selecting your answers. Each question has *only one correct choice*, choose the option that **BEST** represents the answer to the topic.

**Correct answers are shown after the last question.**

Here are some samples of questions and options shown on the exam.

1. Which of the following group of damage types always require repair?

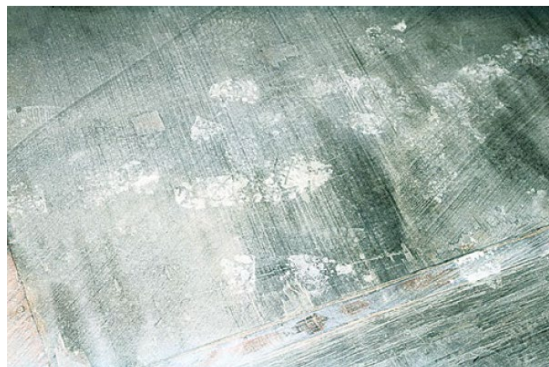
A	B	C	D
Wear & Tear 50 mm (2 in) Dents	Floor Delamination Holes	Wear & Tear Out of ISO	Floor Delamination Corrosion
Holes	TIR violation	Broken	Holes
Cuts	Cuts	Bowed	Out of ISO

2) The IICL tolerances for the following components are expressed by which option?

1. Wooden flooring downward deformation
2. Crossmembers dents
3. Height difference between floorboards
4. Side panels pushed inwards

A	B	C	D
13 mm (1/2 in)	10 mm (3/8 in)	15 mm (9/16 in)	20 mm (13/16 in)
25 mm (1 in)	40 mm (1-9/16 in)	50 mm ( 2 in)	50 mm ( 2 in)
5 mm (3/16 in)	50 mm ( 2 in)	5 mm (3/16 in)	10 mm (3/8 in)
35 mm (1-3/8 in)	20 mm (13/16 in)	35 mm (1-3/8 in)	25 mm (1 in)

3) Of the following conditions in a dry-van container, which one would always require cleaning?



1



2



3

4

- A. 1 and 2
- B. 2 and 3
- C. 3 and 4
- D. 4 only

4) The photo below shows a condition that is typical of:



- A. Wear and tear
- B. Impact Damage
- C. Equipment misuse
- D. Improper repair



5) Which of the below photos show non-transferable stains on interior side panels that require repairs?

1



2



3



4



- A. 1 and 2
- B. 2 and 4
- C. 3 and 4
- D. None

6) During corner fitting replacements the IICL recommends that the adjoining parts be beveled to a \_\_\_\_\_ degrees to ensure proper weld penetration.

- A. 30 degrees
- B. 45 degrees
- C. 55 degrees
- D. 60 degrees

7) Which IICL manual provides guidelines to inspectors to ascertain whether damages to the floor are result of normal wear and tear or damage.

- A. Inspection manual 6<sup>th</sup> edition
- B. Cleaning manual 3<sup>rd</sup> edition
- C. Gray area manual 2<sup>nd</sup> edition
- D. Repair manual 5<sup>th</sup> edition

8) Which of the following is an example of a floorboard condition requiring repair and should be considered as damage?

- A. Panel sponginess, sags between crossmembers and/or hollow sounding hammer taps *with* indication of either impact (dents or gouges) or overloading (permanently bowed underlying crossmembers) and *with* breakage (finger cracks or more severe breaks) of an outer veneer.
- B. Breakage of an outer veneer, without delamination, rolling-shear failure or indication of impact or overloading.
- C. Breakage of an outer veneer, without delamination or rolling-shear failure but *with* an indication of impact or overloading
- D. All the above.

9) Where should the reference line be placed to determine repair worthiness of a crossmember lower flange that is bent upwards?

- A. Along the inside lower formed edge of the crossmember
- B. Spaced out from the crossmember web
- C. On the outermost flange surface along the full crossmember length
- D. No measurement is necessary.

10. Rework of previously straightened panels is required when

- A. evidence of hammer marks is present
- B. original profile of the corrugation is not fully restored
- C. the straightened area is an incorrect color
- D. the owner's policy requires repair

11. Door gaskets that are cut may be repaired by using cyanoacrylate adhesives to bond together the cut edges of the gasket, PROVIDED

- (I) No gasket material is missing
- (II) The cut edges of the gasket mate together
- (III) The cyanoacrylate adhesive will fill voids that exist at the joint

- A. I only
- B. I and II only
- C. II and III only
- D. I, II and III

12. When heat is used to straighten a corner post, the damaged area should be heated no more than

- A. 550°C (1022°F)
- B. 650°C (1200°F)
- C. 750°C (1300°F)
- D. 850°C (1560°F)

13. Cumulative scratches on the interior standing corrugation resulting from cargo loading operations is considered \_\_\_\_\_ and numerous scratches on the interior recessed corrugation are considered \_\_\_\_\_.

- A. ...wear and tear.....damage.
- B. ...wear and tear.....wear and tear.
- C. ...damage.....wear and tear.
- D. ...damage.....damage.

14. All portions of both corrugated and flat roofs must allow a minimum of \_\_\_\_\_ clearance between the highest point on the roof (not including corner protection plates) and the plane of the upper faces of the top corner fittings, as required by ISO standards; corrugated profiles must fit accordingly.

- A. ...5 mm (3/16 in)...
- B. ...20 mm (13/16 in)...
- C. ...6 mm (1/4 in)...
- D. ...10 mm (3/8 in)...

### Correct answers

Question #	Answer	Question #	Answer
1	B	8	D
2	C	9	D
3	D	10	D
4	C	11	B
5	D	12	B
6	B	13	A
7	C	14	C

General information about the format of the Exam.

Questions and answers will address:

- ❖ True versus false statements, damage tolerances, materials and repair practices.
- ❖ Acceptable and not acceptable materials, repair methods, cleanliness conditions, etc.
- ❖ various other types of quizzes and formats not shown above.

If you have specific questions about the manuals, you may contact us via email at [info@iicl.org](mailto:info@iicl.org)