



FOR IMMEDIATE RELEASE
30 November 2018

The IICL launches a new inspection tool, makes inspections easier

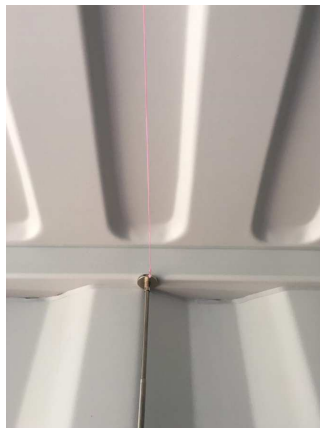
Washington, D.C. - In order to facilitate and speed up the process of measuring roof dents and bows, the IICL developed a new tool kit that allows surveyor to properly measure the roof panels for outwards and inwards deflections. The IICL determined the proper methodology to measure roof panel damages using the top side rails as reference and conducting the measurement from inside the container. While the method provides accurate results, it requires surveyors to carry a small step ladder or stool to allow the positioning of the reference line on the top rails especially on high cube containers. The roof inspection kit designed and developed by the IICL makes the inspection process fast and easy, it takes less than a minute to determine if a roof panel requires repairs based on IICL standards. Luiz Goncalves, the IICL Director of Technical Services commented "While the methodology required by the IICL to measure roof panel damages were accurate they were not very practical for surveyors in the field. The new tool has made the process effortless and straightforward." The new tool is now available at the IICL store <https://forms.iicl.org/store/>.

The IICL is issuing a Technical Bulletin that will set the bottom face of the top side rails as reference point for outward damages, same reference point currently used for inward damages. The new tool can easily handle both situations. A video demonstrating the use of the tool is also available at <https://forms.iicl.org/store/roof-measuring-tool-kit/>.

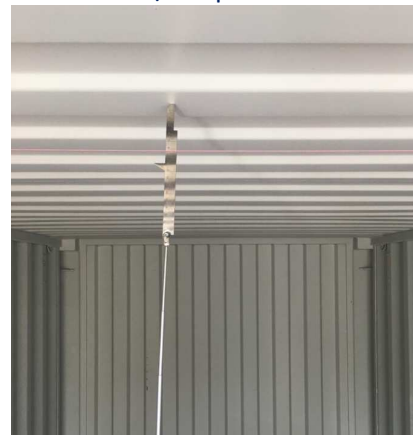
Tool Kit



Reference point



Pass / No pass ruler





About the IICL

Organized in 1971, the IICL is a trade association, representing lessors of maritime containers and intermodal chassis. Its member companies, Beacon, CAI, Direct ChassisLink, FlexiVan, SeaCube, Textainer, TOUAX, TRAC Intermodal, and Triton International Limited, own or manage a significant portion of the global leased container and U.S. chassis fleets.

The IICL is active in educational, technological, safety, environmental, governmental, regulatory, and security issues. Complementing its widely accepted industry standards and best practices, the IICL offers its inspector certification examinations in more than 5,000 locations around the world, supported by publications and courses.

For more information, please contact the IICL via info@iicl.org , or +1 202 223-9800.